

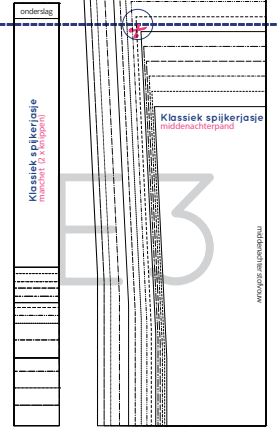
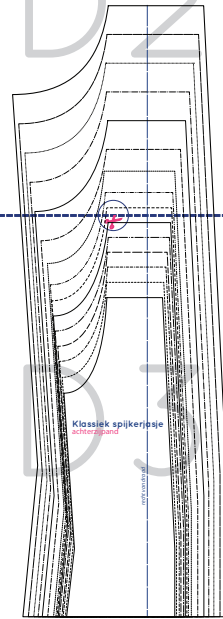
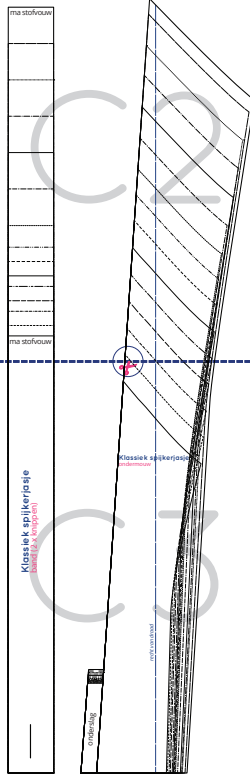
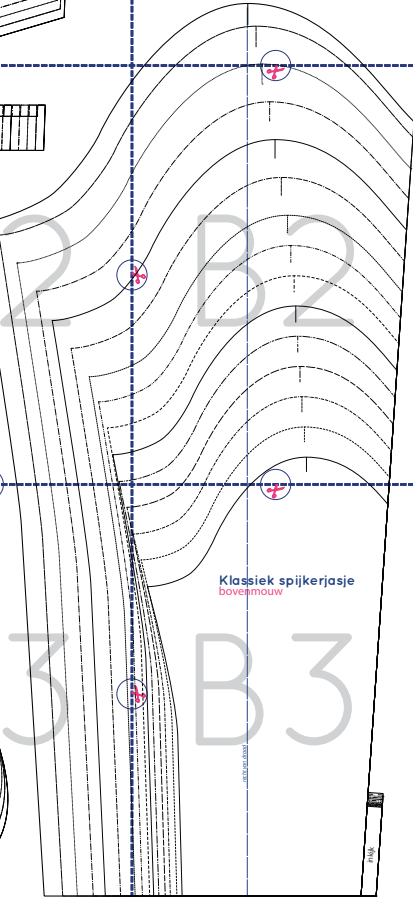
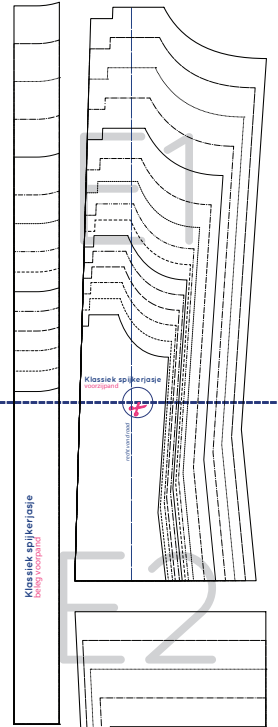
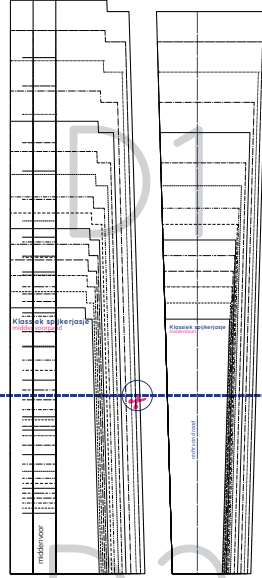
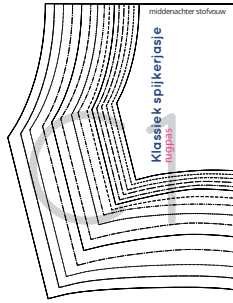
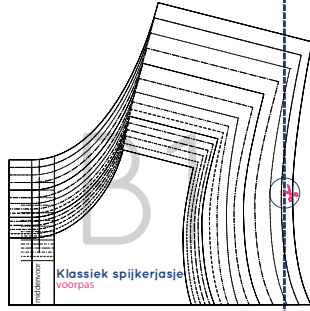
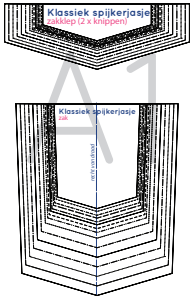
Klassiek spijkerjasje

maten 92 t/m 176 breedtemaat S

Print op ware grootte!

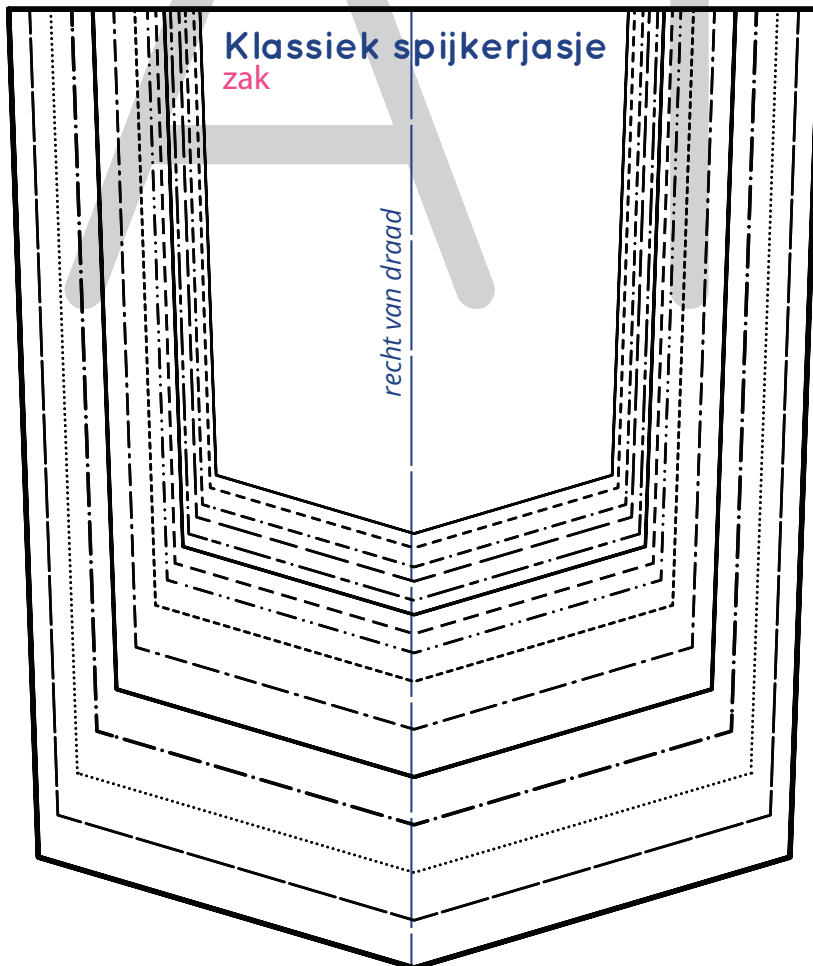
Print eerst deze pagina en controleer of je instellingen goed zijn door middel van dit testvierkantje van 5 x 5 cm.

92	_____	140	-----
98	-----	146	-----
104	-----	152	_____
110	-----	158	-----
116	-----	164
122	_____	170	-----
128	-----	176	_____
134	-----		





modevakschool
Madamedam

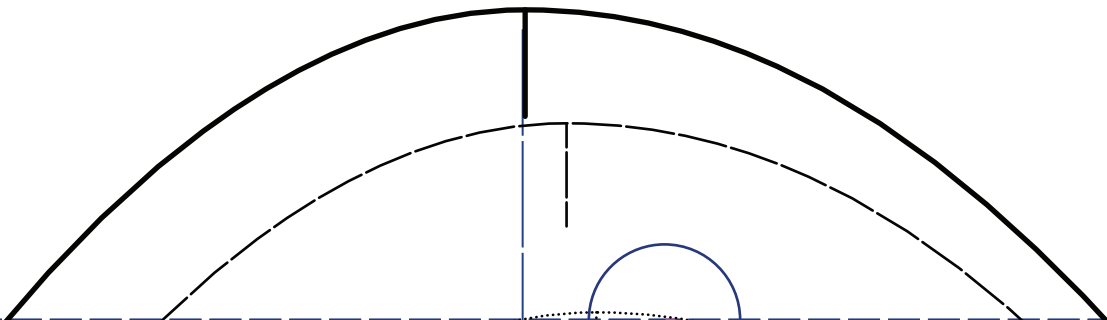




middenvoor

Klassiek spijkerjasje

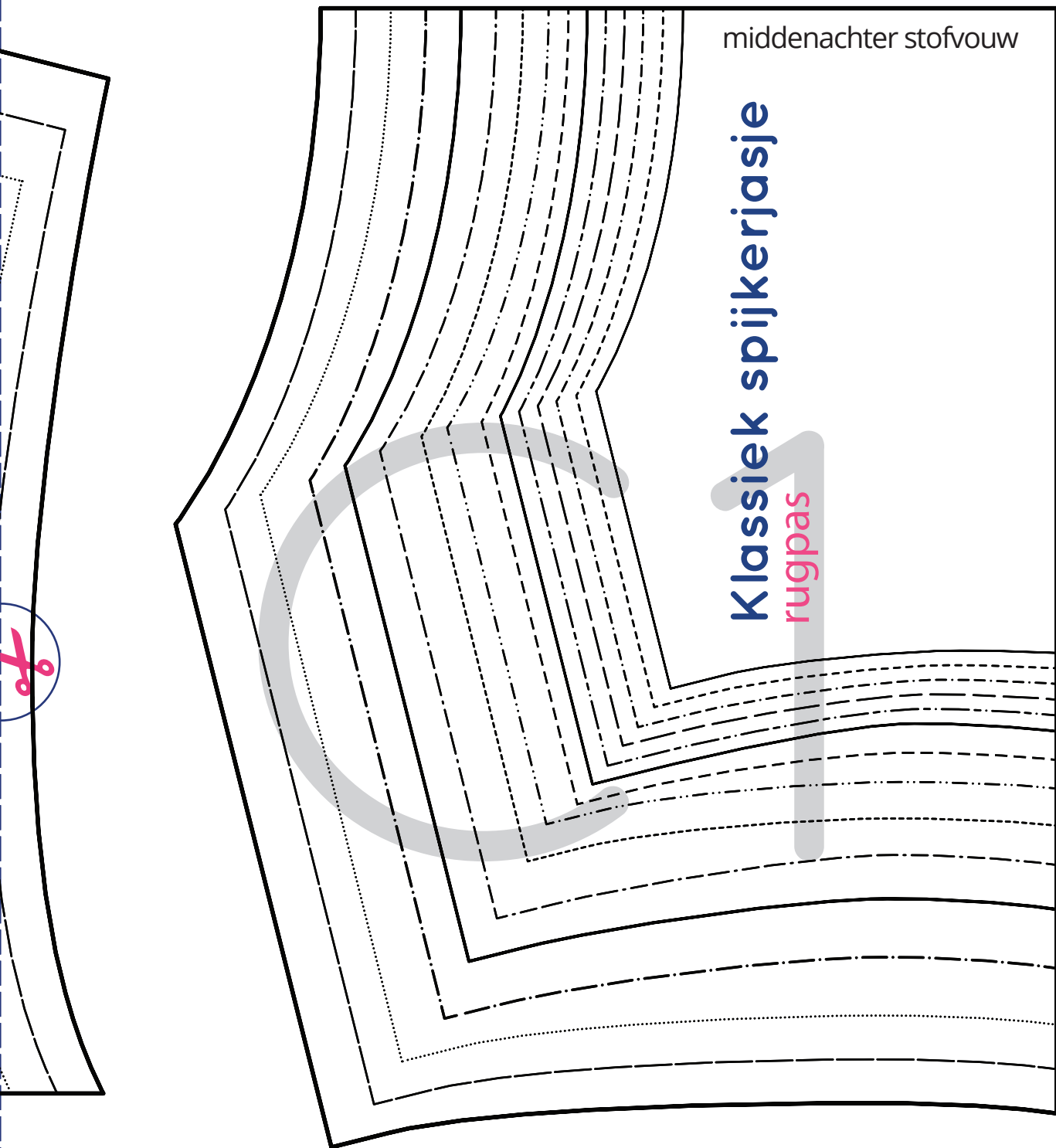
voorpas

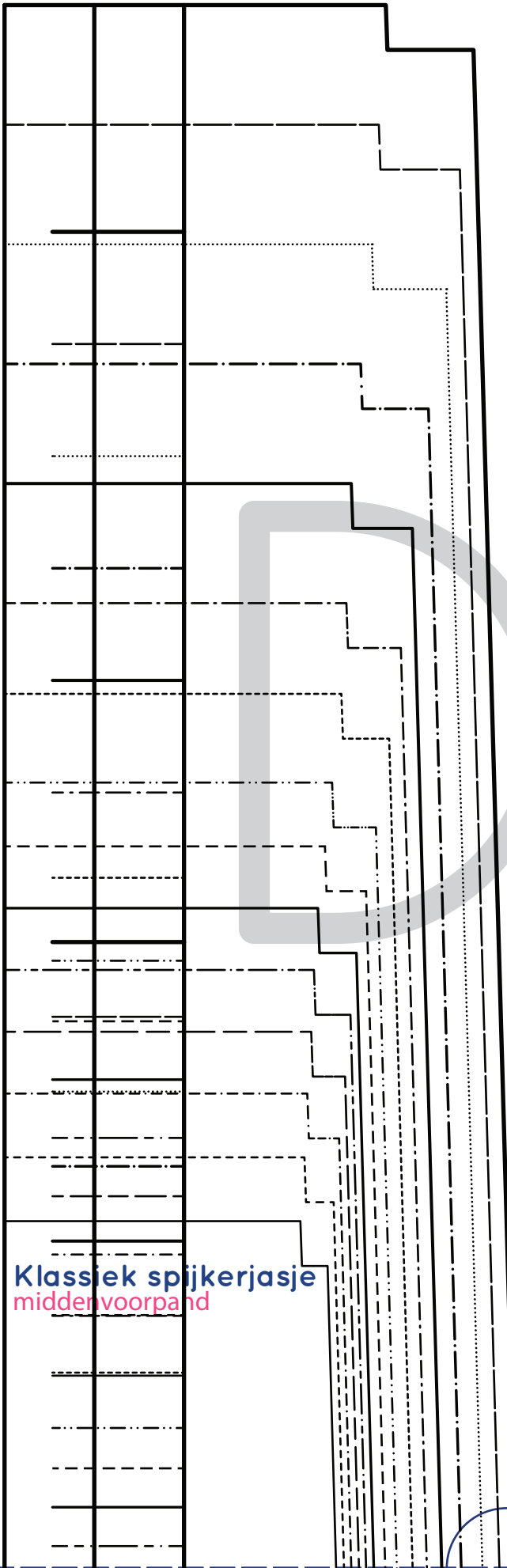


middenachter stofvouw

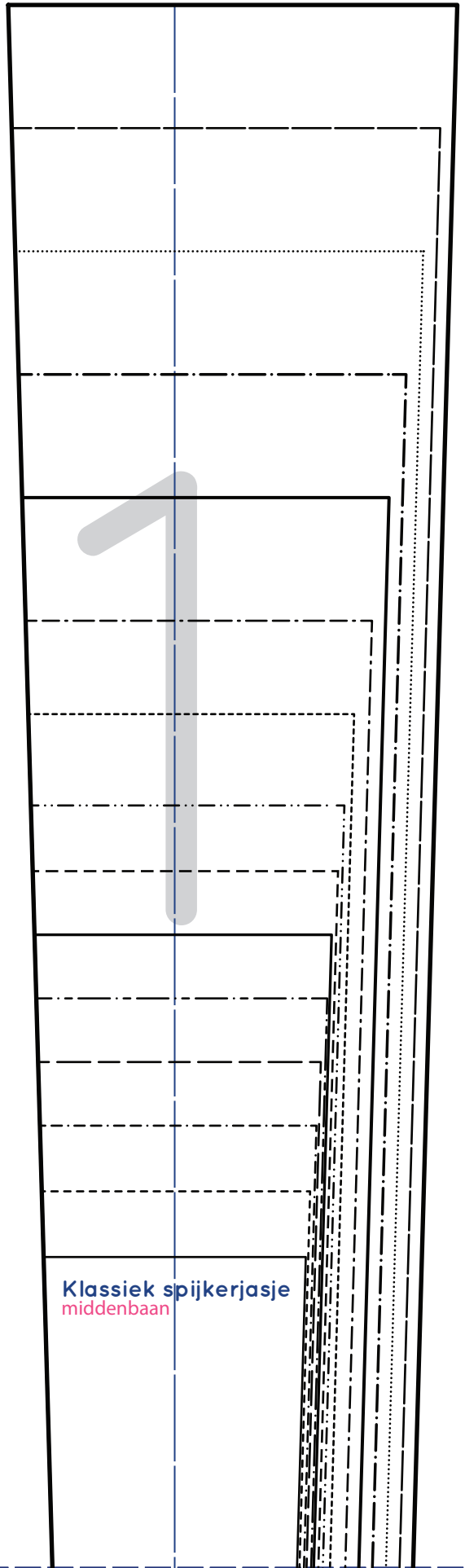
Klassiek spijkerjasje

rugpas

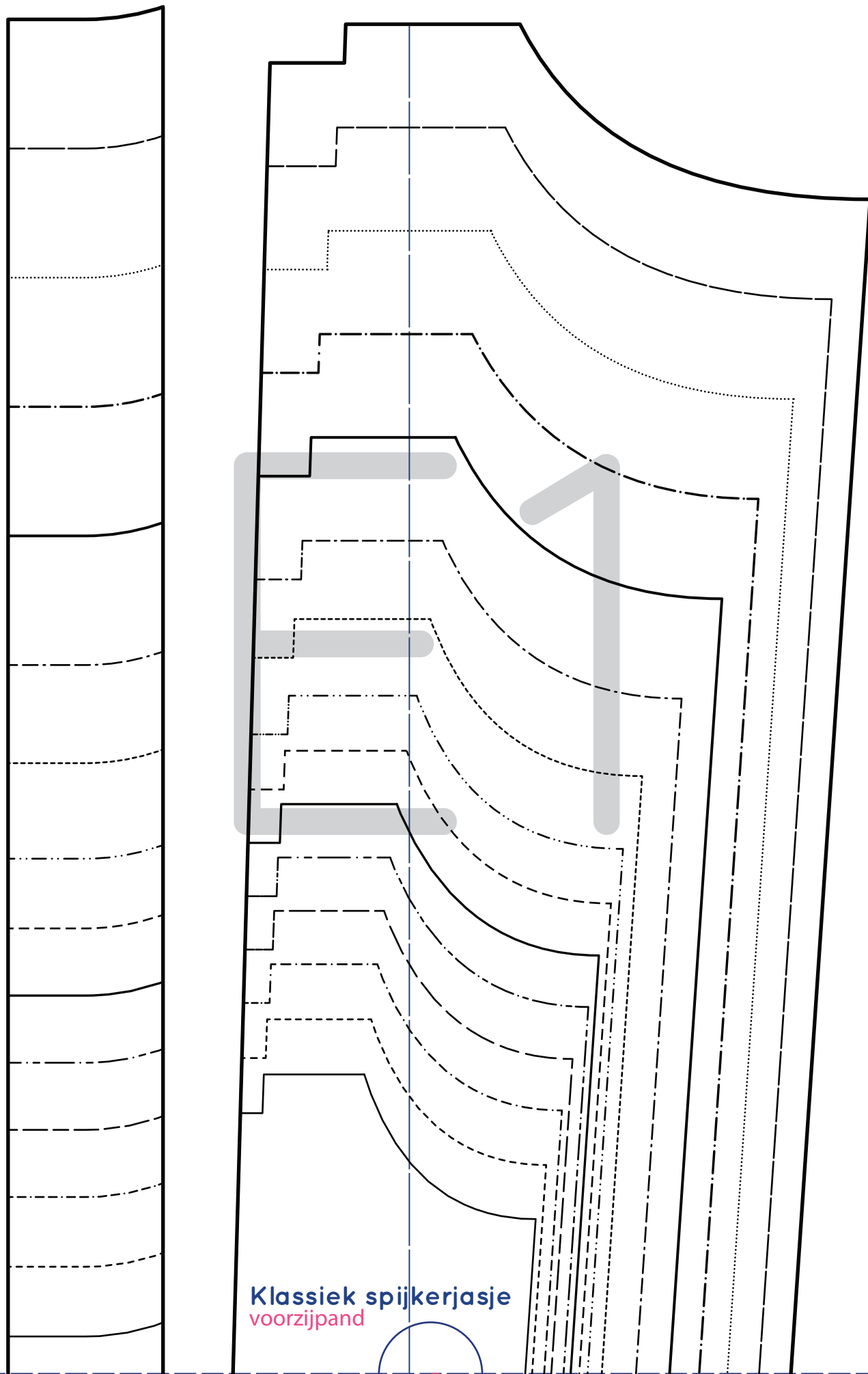




Klassiek spijkerjasje
middenvoorband



Klassiek spijkerjasje
middenbaan



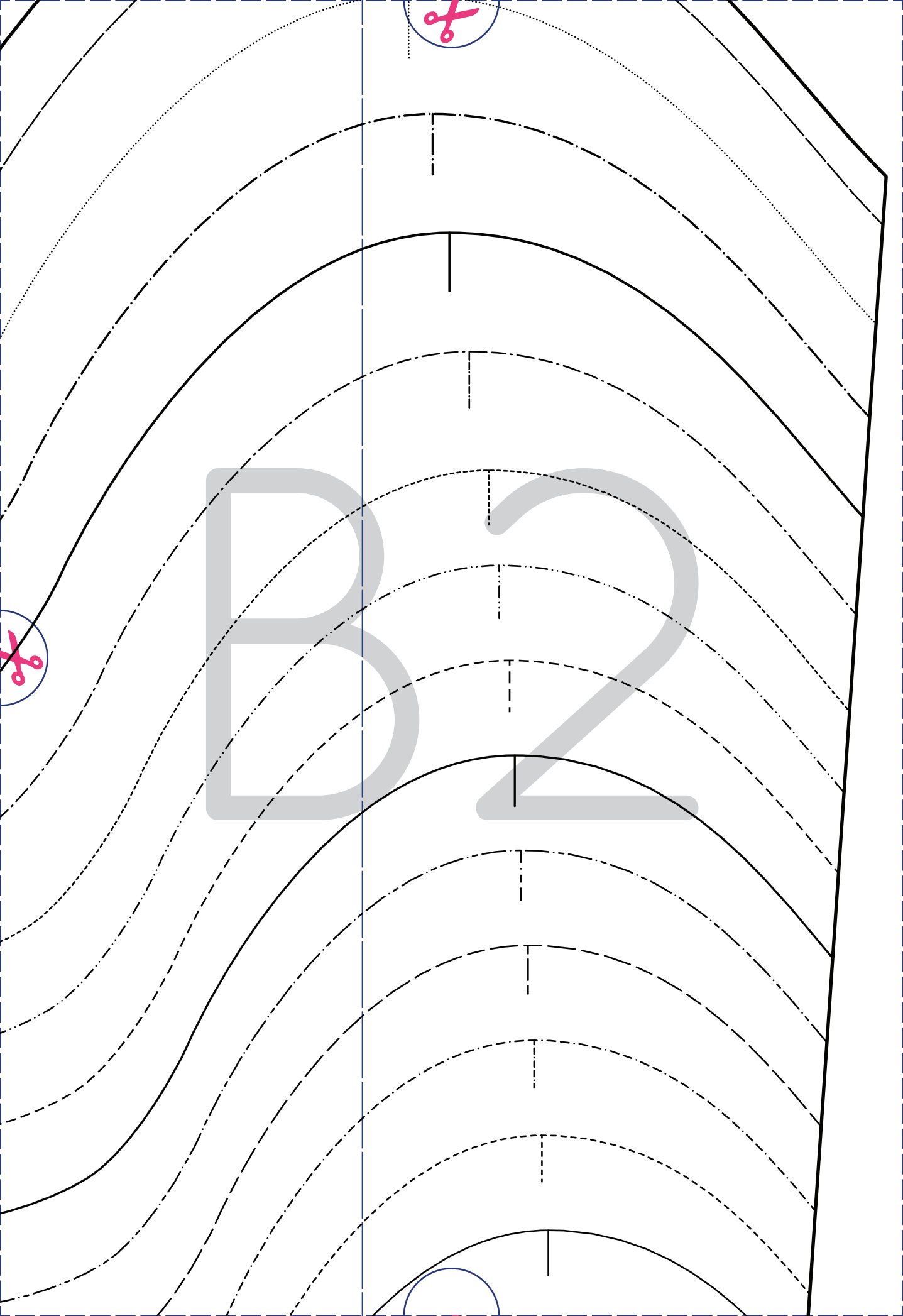
Klassiek spijkerjasje
voorzijpand



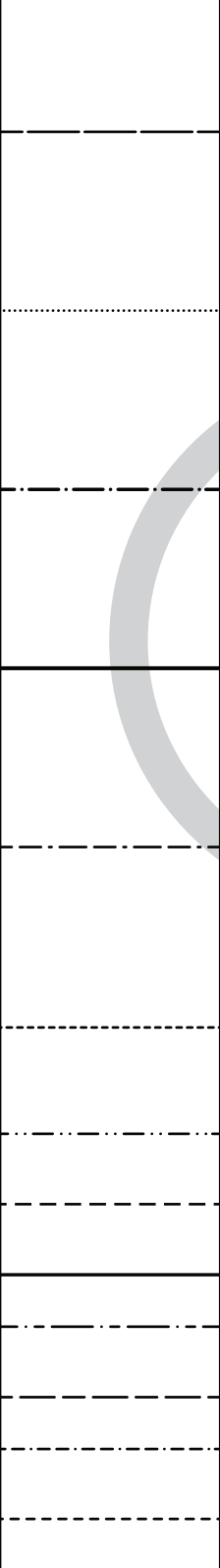
A

P

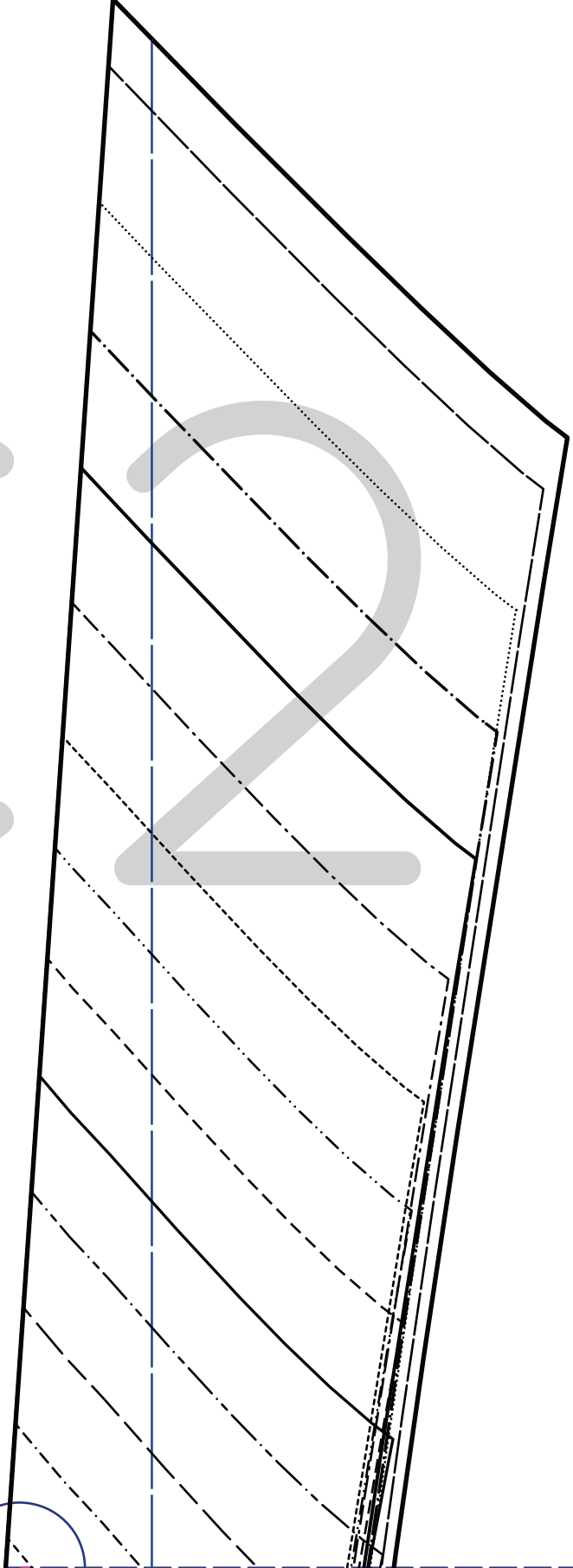




ma stofvouw



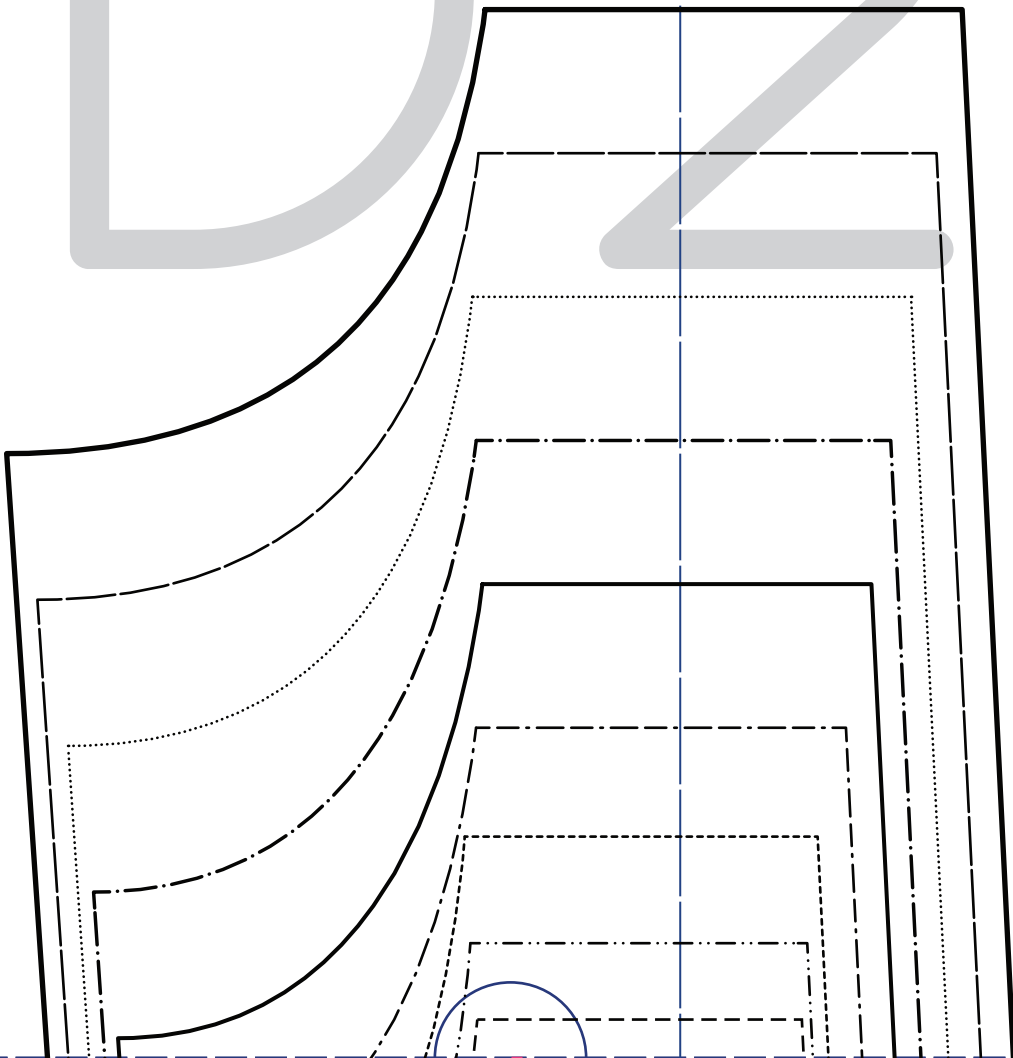
ma stofvouw



middenvoor



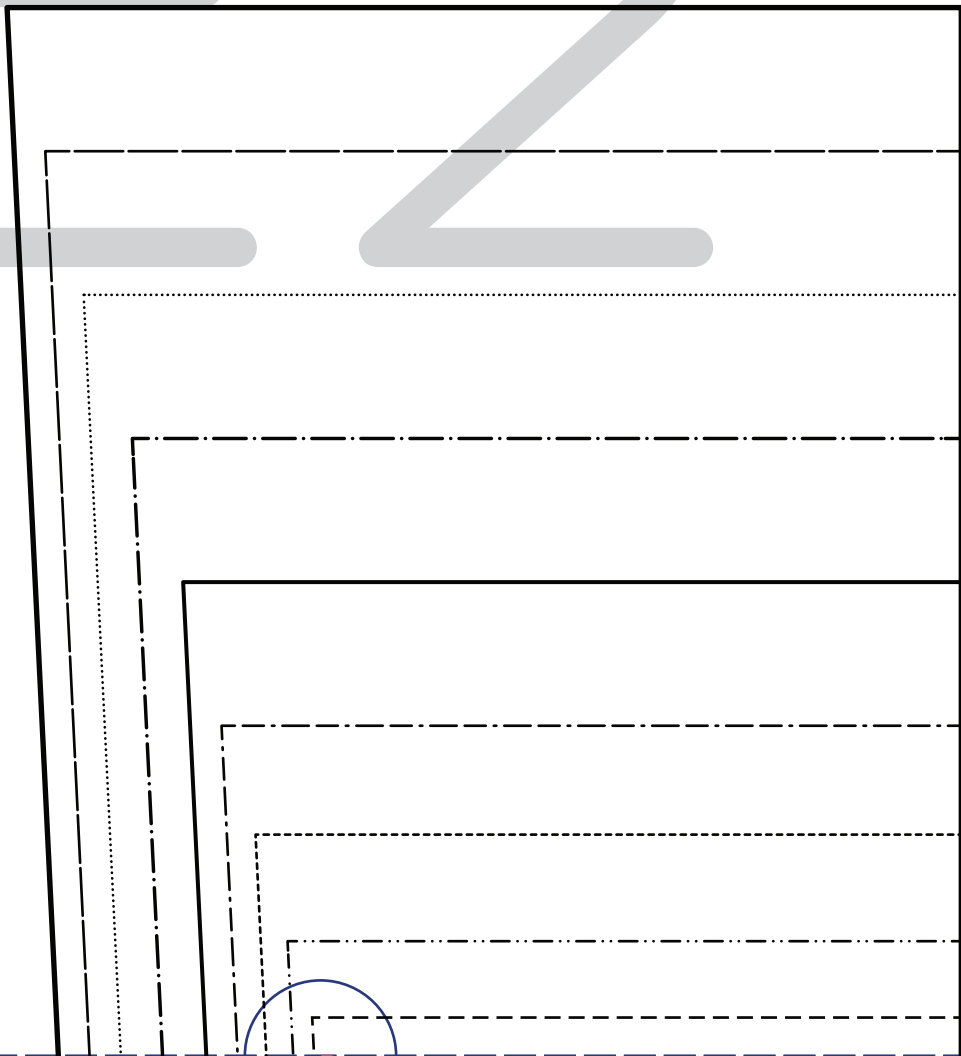
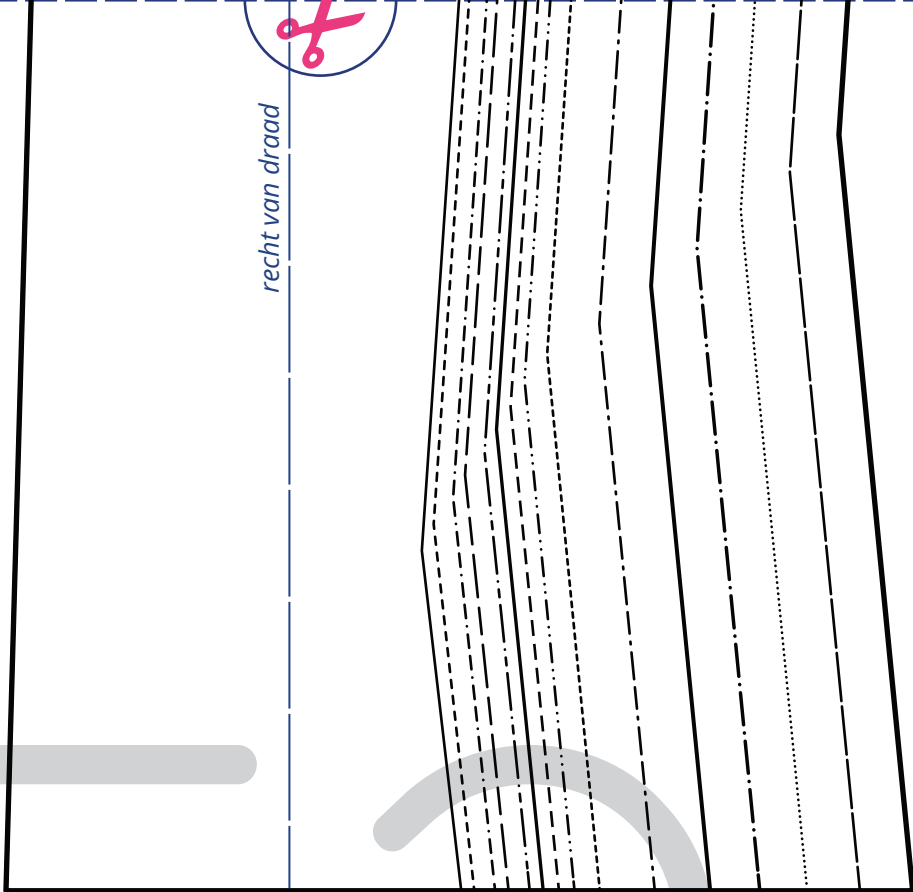
recht van draad



Klassiek spijkerjasje

beleg voorpand

recht van draad



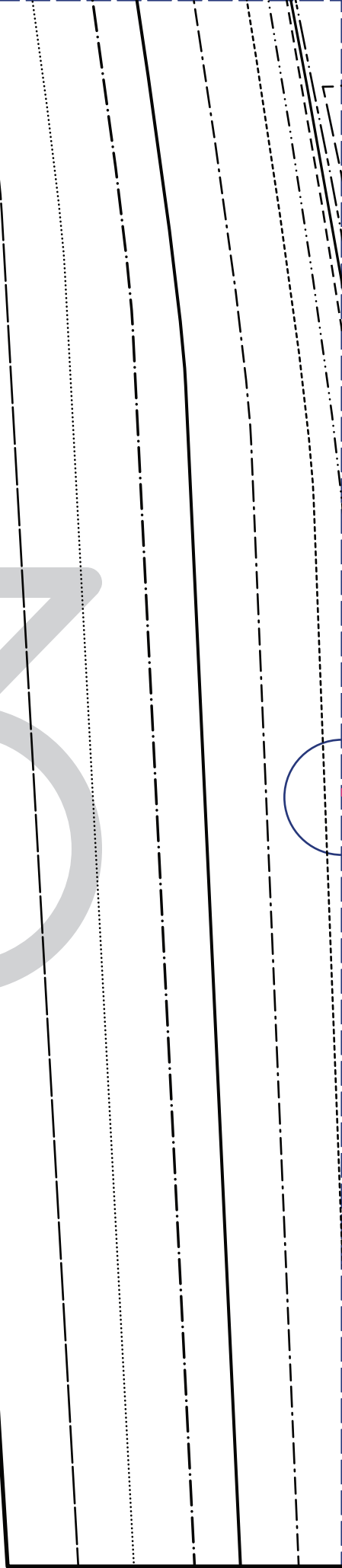
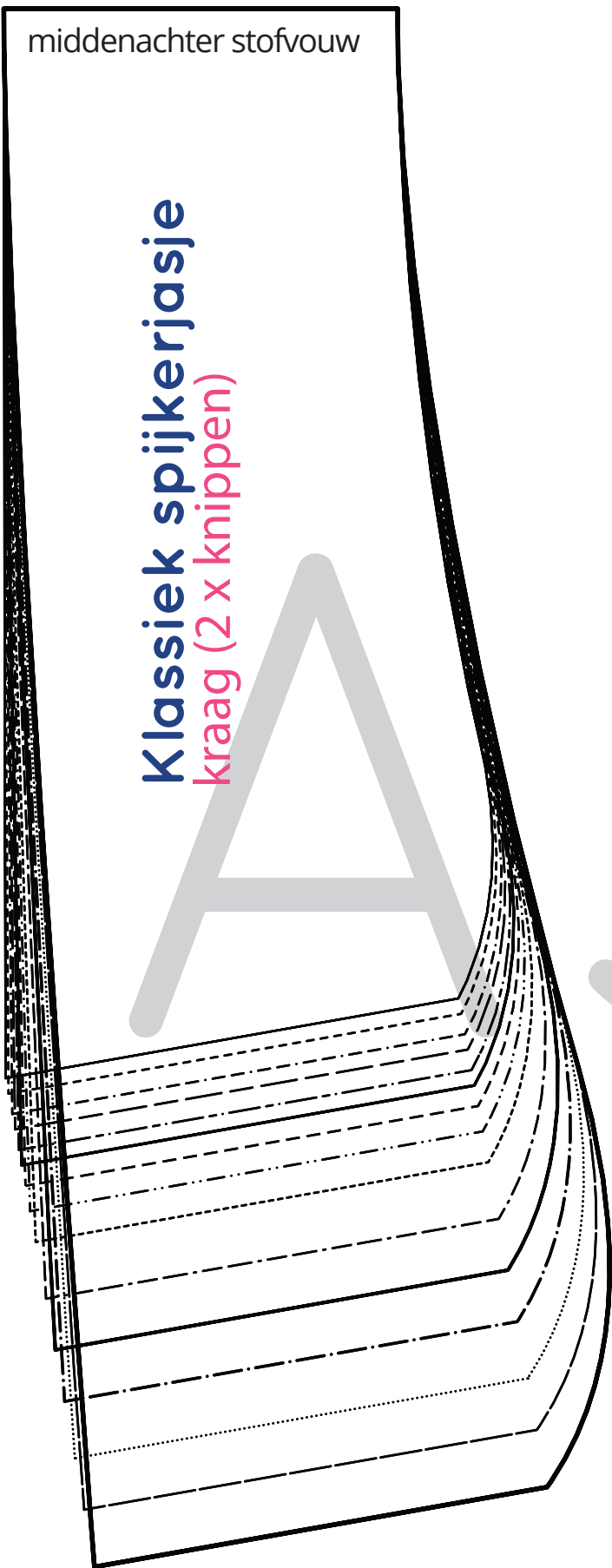
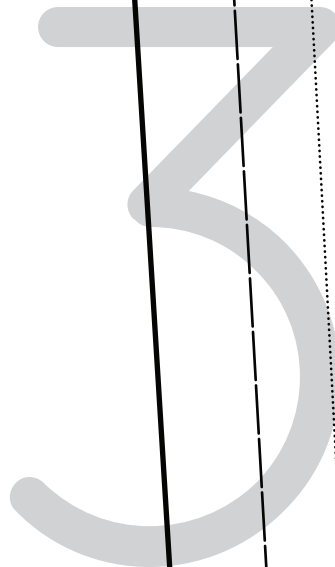
onderslag



middenachter stofvouw

Klassiek spijkerjasje

kraag (2 x knippen)





Klassiek spijkerjasje
bovenmouw

B3

recht van draad



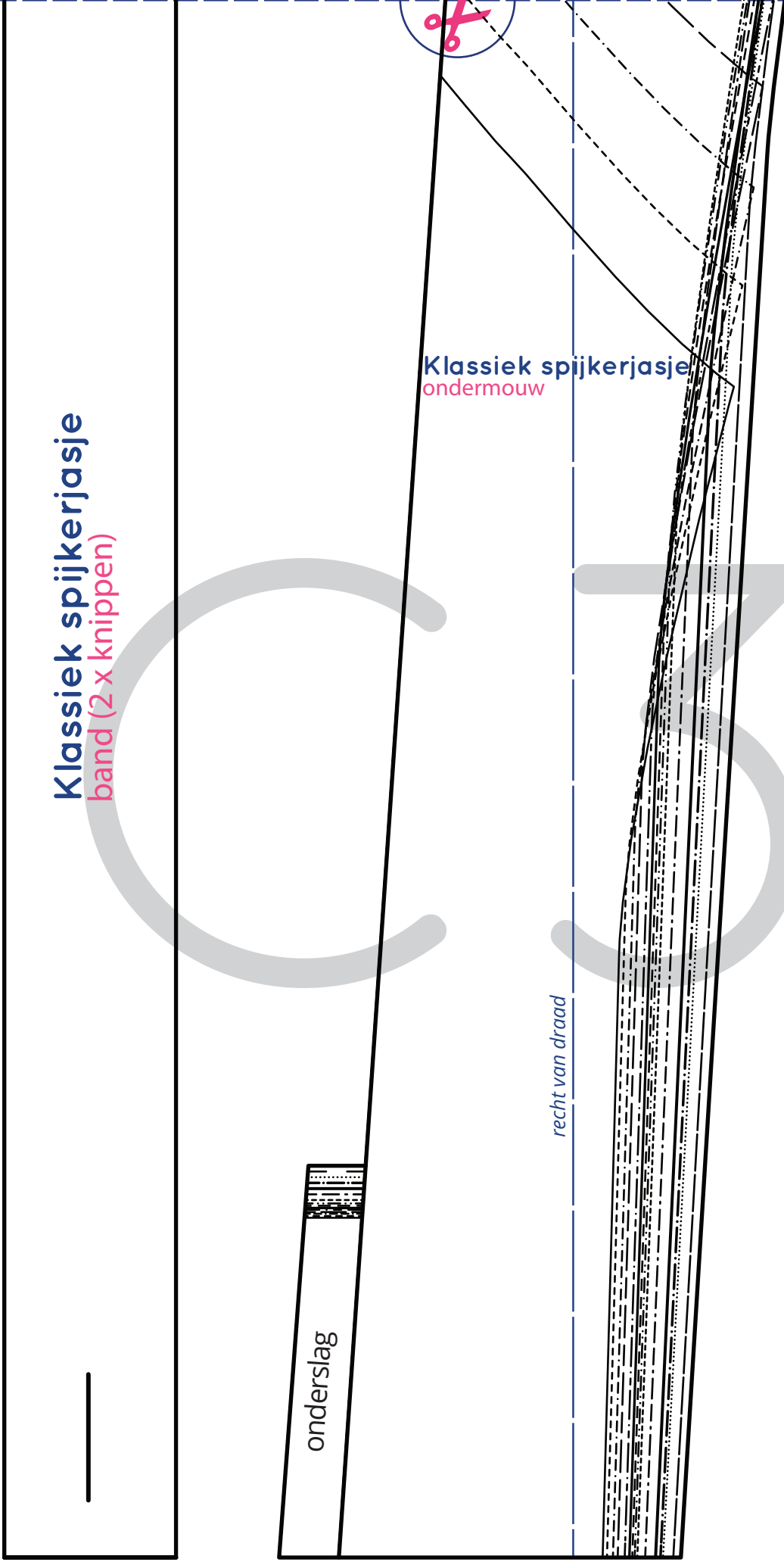
inkijk

Klassiek spijkerjasje
band (2 x knippen)

onderslag

Klassiek spijkerjasje
ondermouw

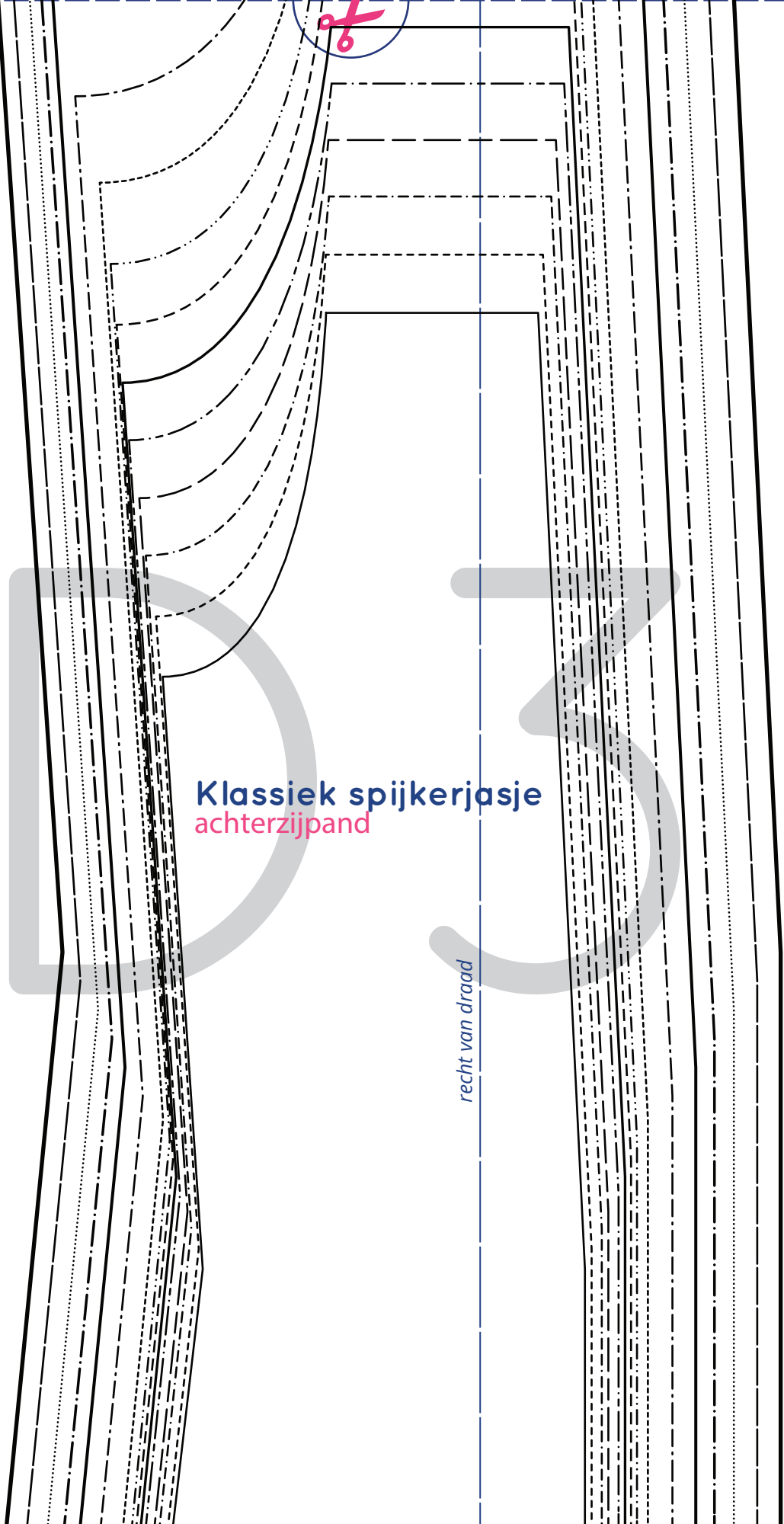
recht van draad



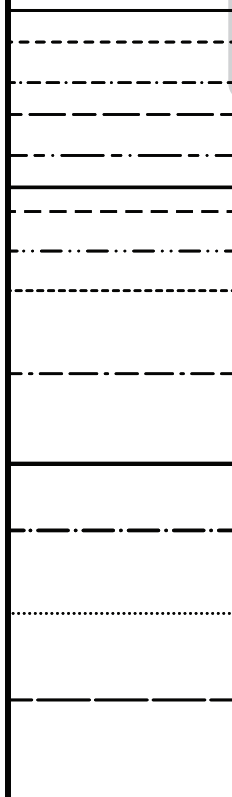


Klassiek spijkerjasje
achterzijpand

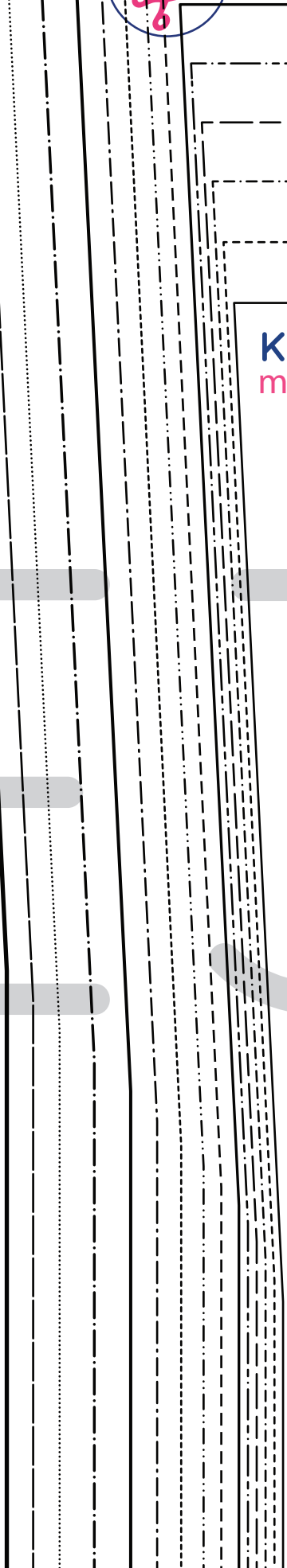
recht van draad



Klassiek spijkerjasje
manchet (2 x knippen)



Klassiek spijkerjasje
middenachterpand



middenachter stofvoew