

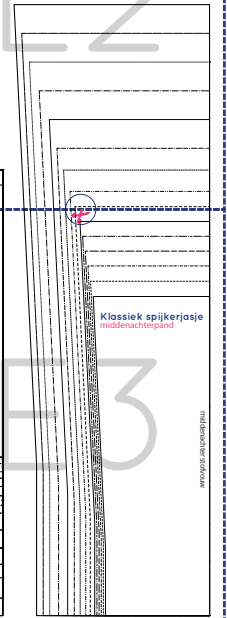
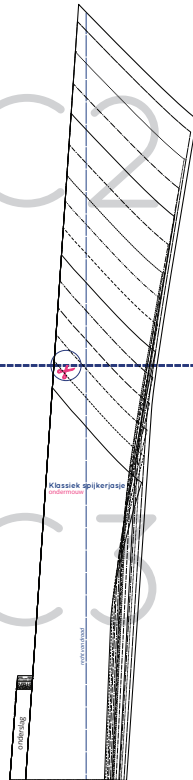
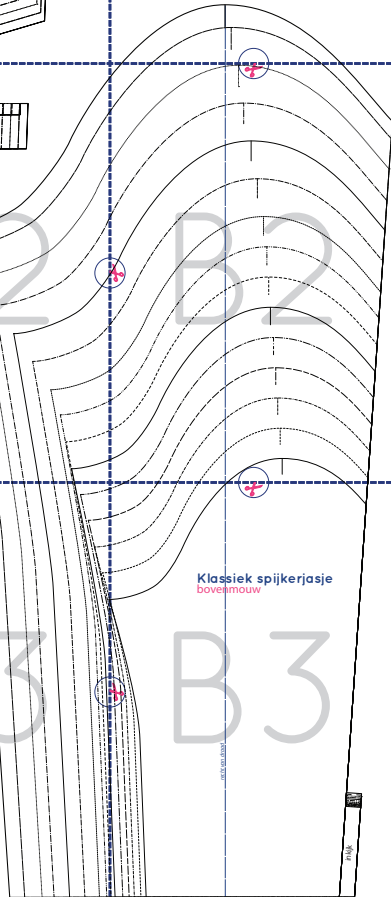
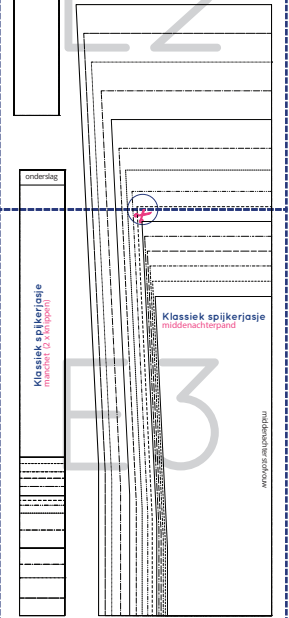
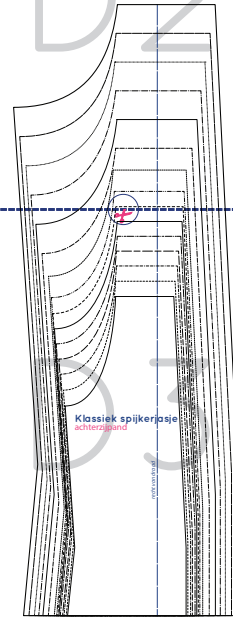
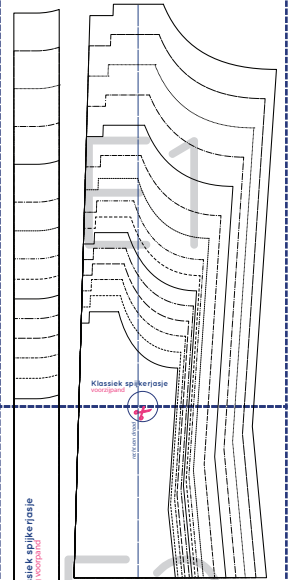
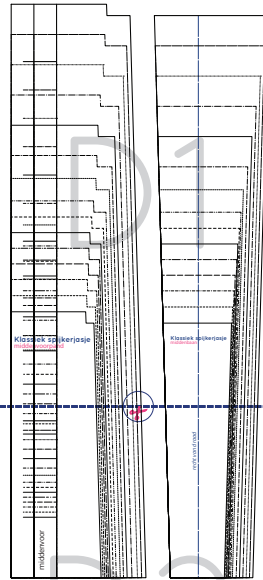
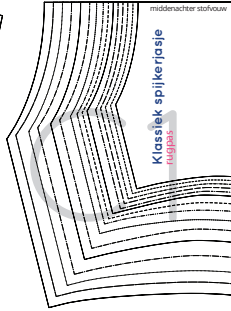
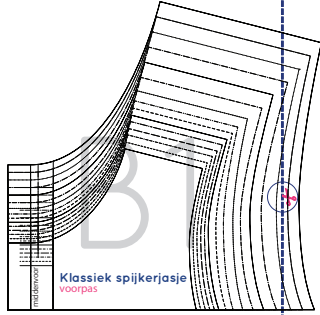
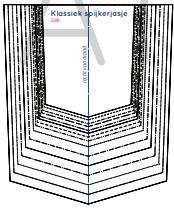
# Klassiek spijkerjasje

maten 92 t/m 176 breedtemaat M

Print op ware grootte!

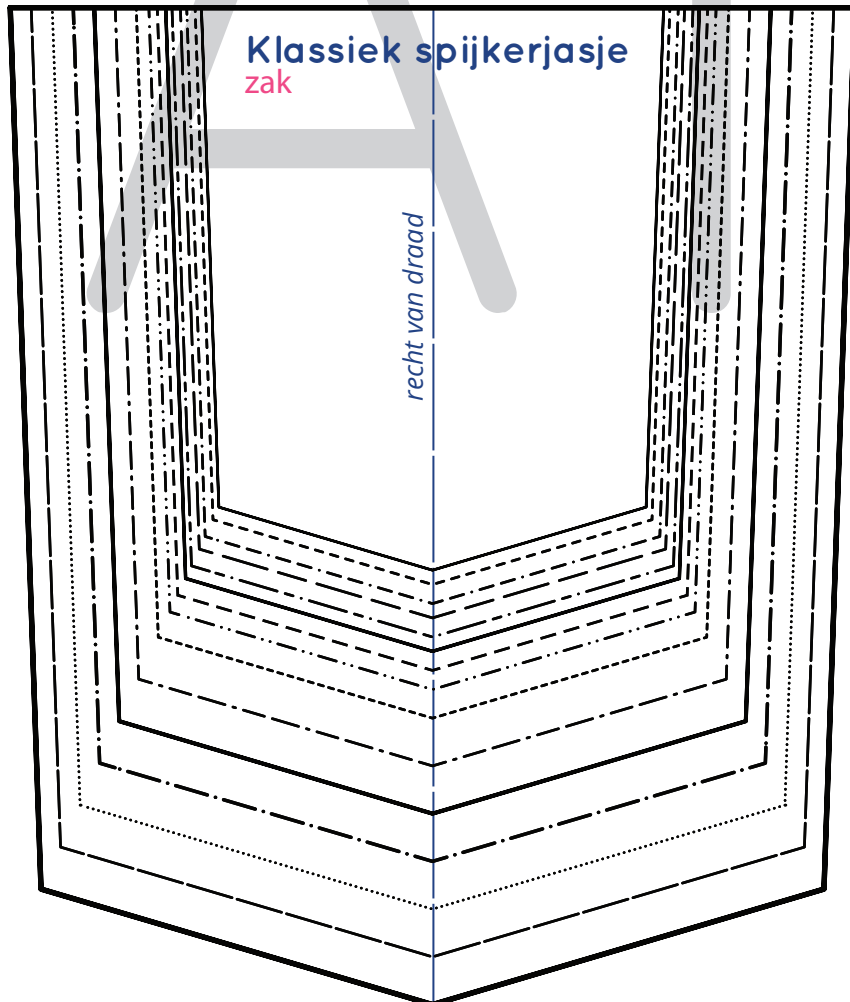
Print eerst deze pagina en controleer of je instellingen goed zijn door middel van dit testvierkantje van 5 x 5 cm.

92	_____	140	-----
98	-----	146	-----
104	-----	152	_____
110	-----	158	-----
116	-----	164	.....
122	_____	170	-----
128	-----	176	_____
134	-----		





modevakschool  
Madamedam

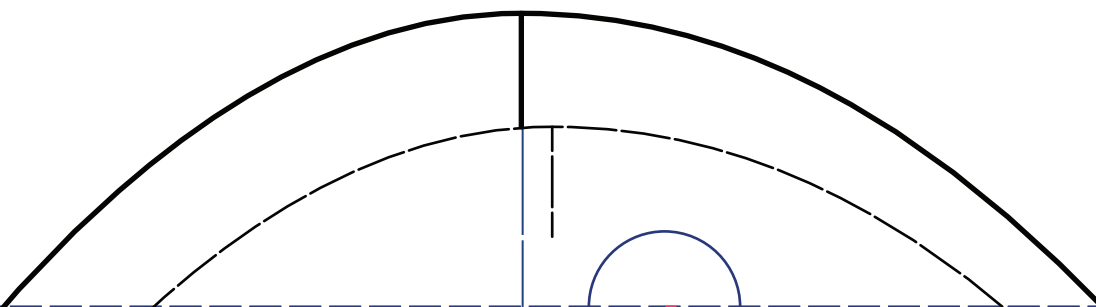




middenvoor

# Klassiek spijkerjasje

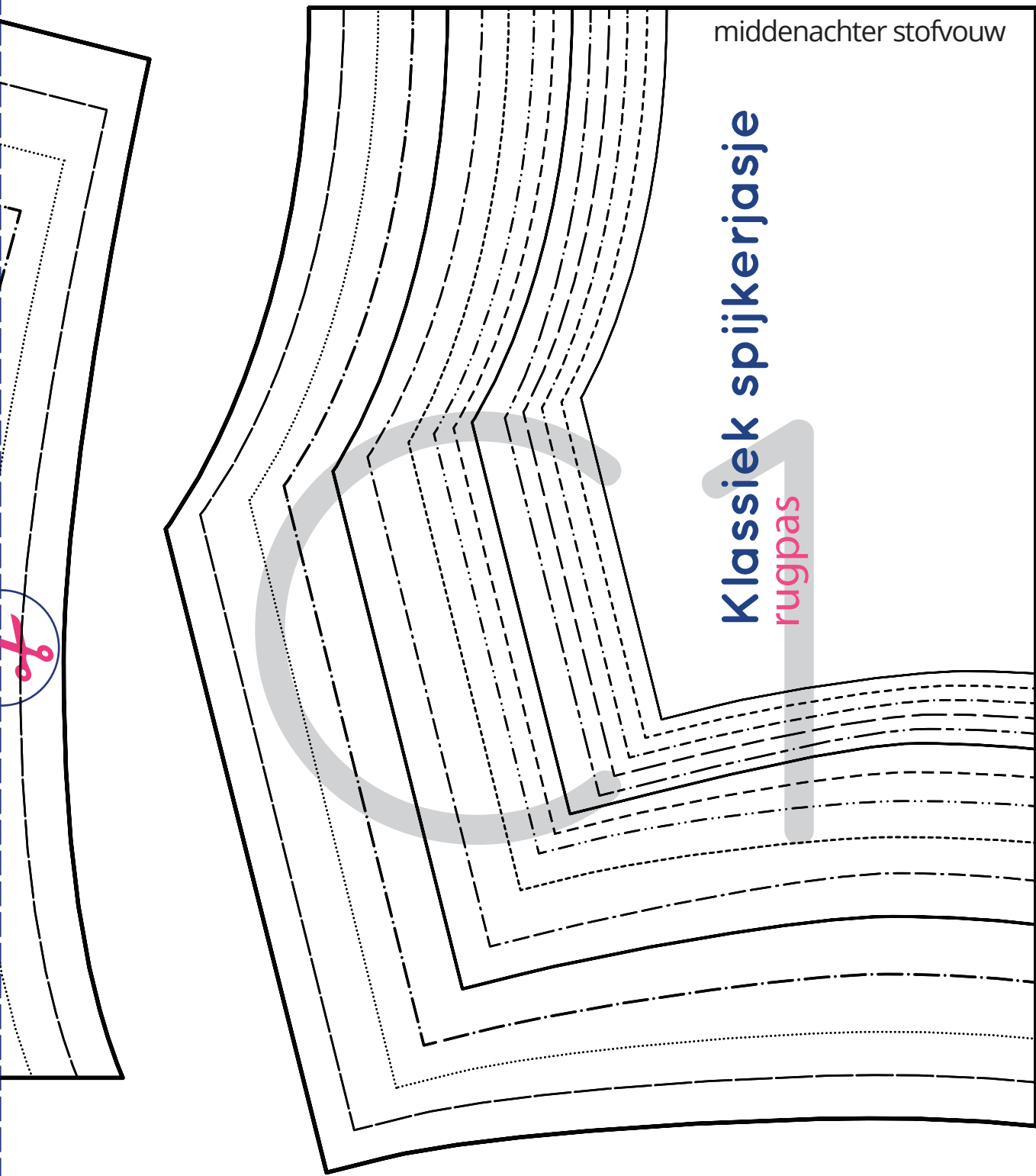
voorpas

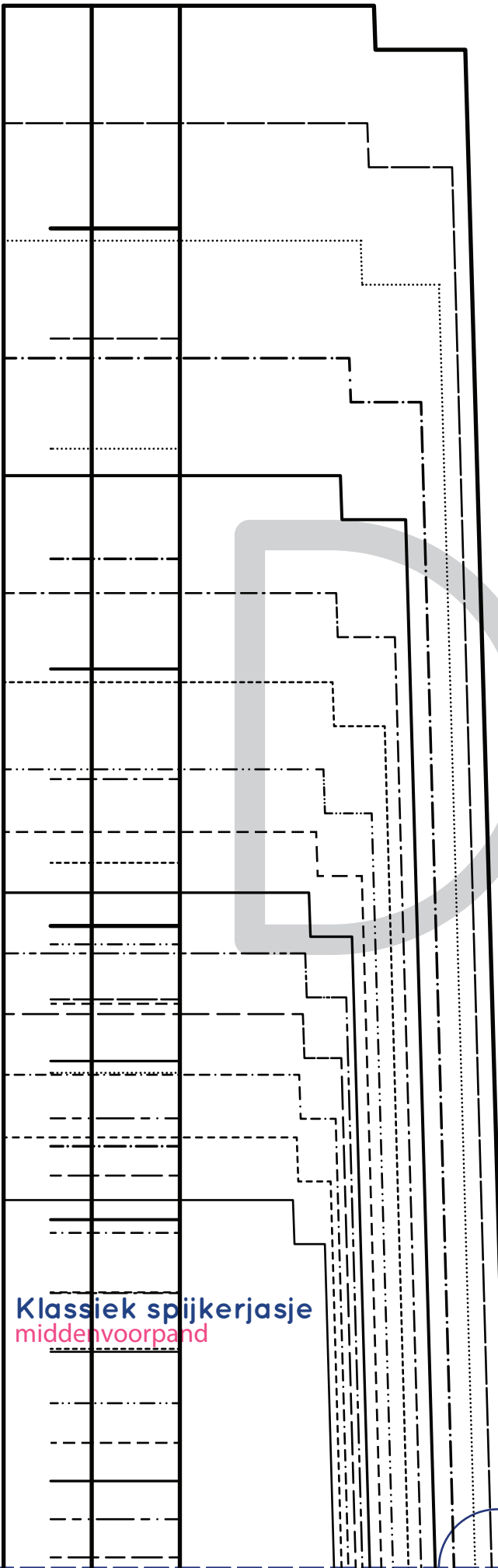


middenachter stofvouw

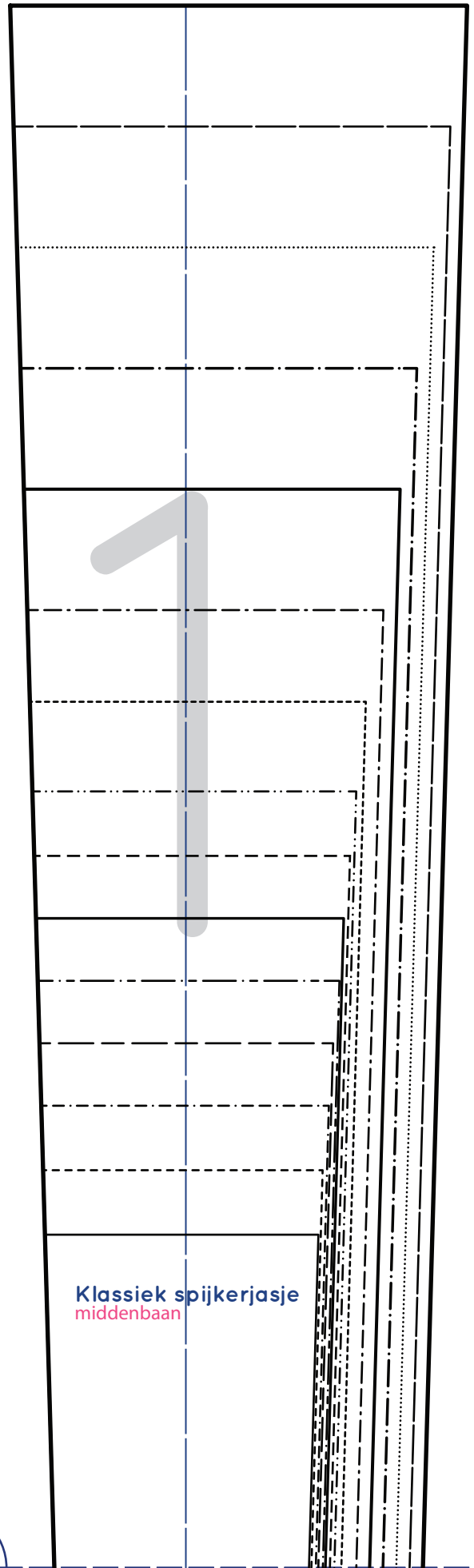
# Klassiek spijkerjasje

rugpas

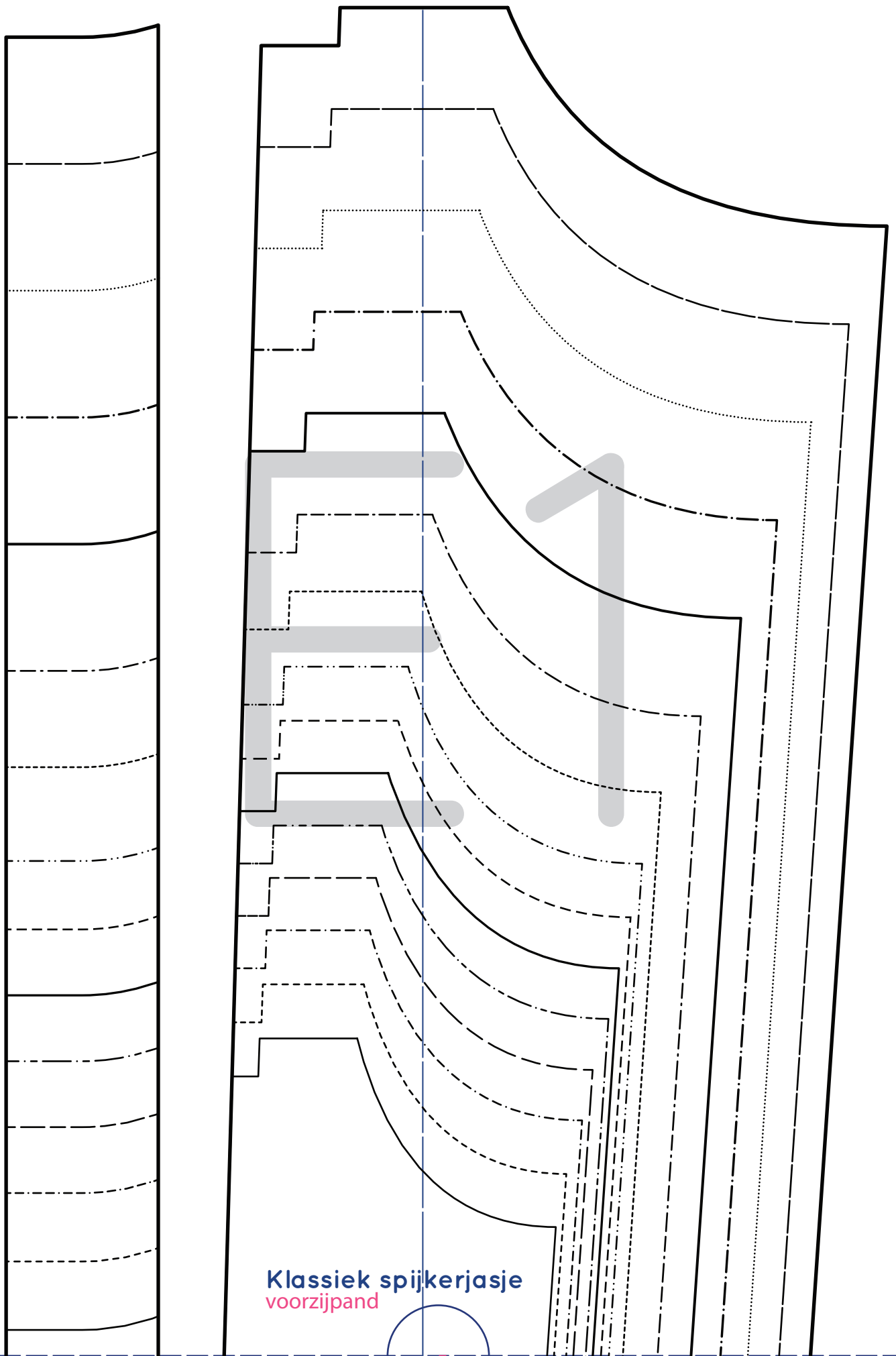




**Klassiek spijkerjasje**  
middenvoorpand



**Klassiek spijkerjasje**  
middenbaan



Klassiek spijkerjasje  
voorzijpand

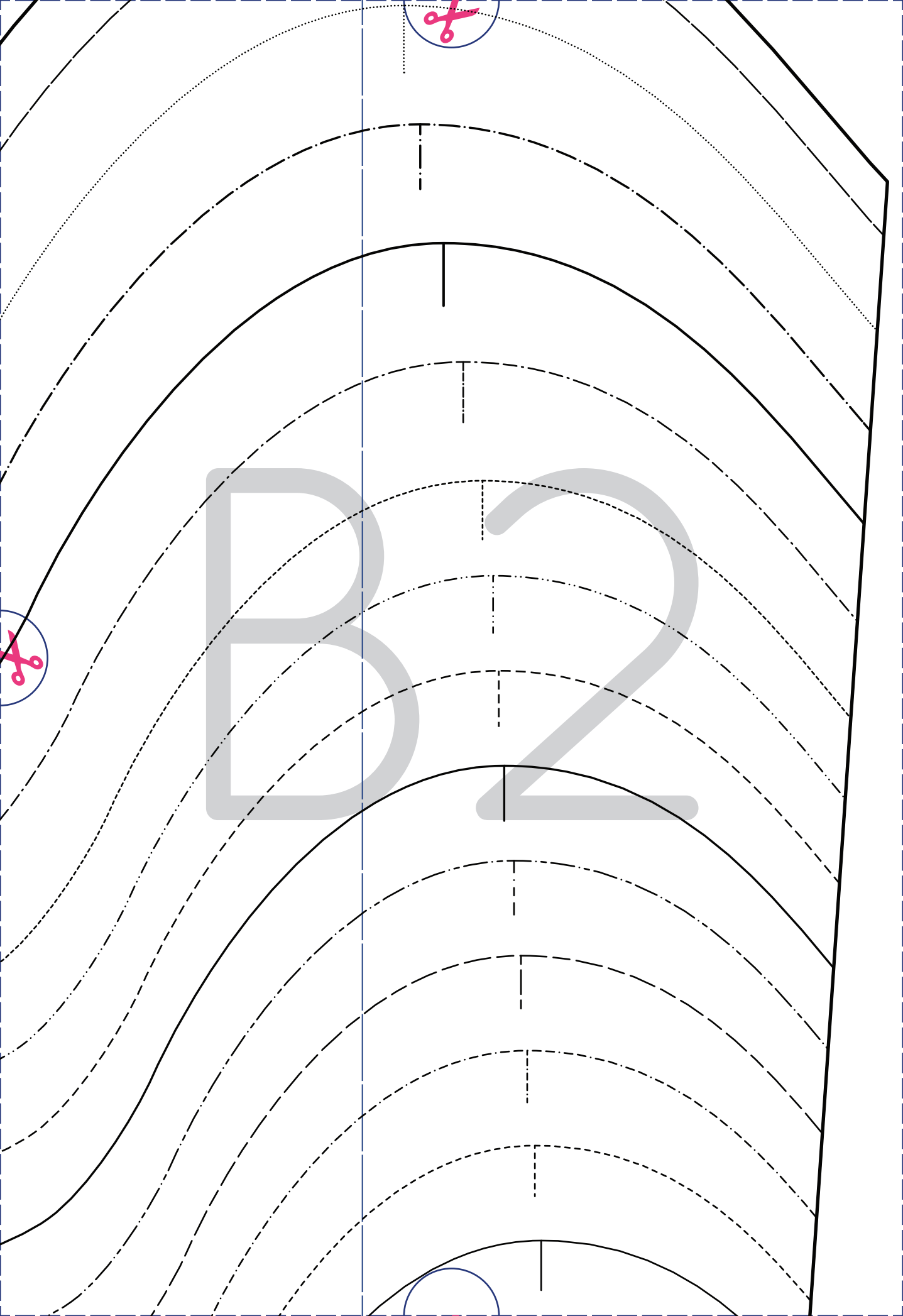


Klassiek spijkerjasje  
zakbeleg (katoenen voering)

AZ

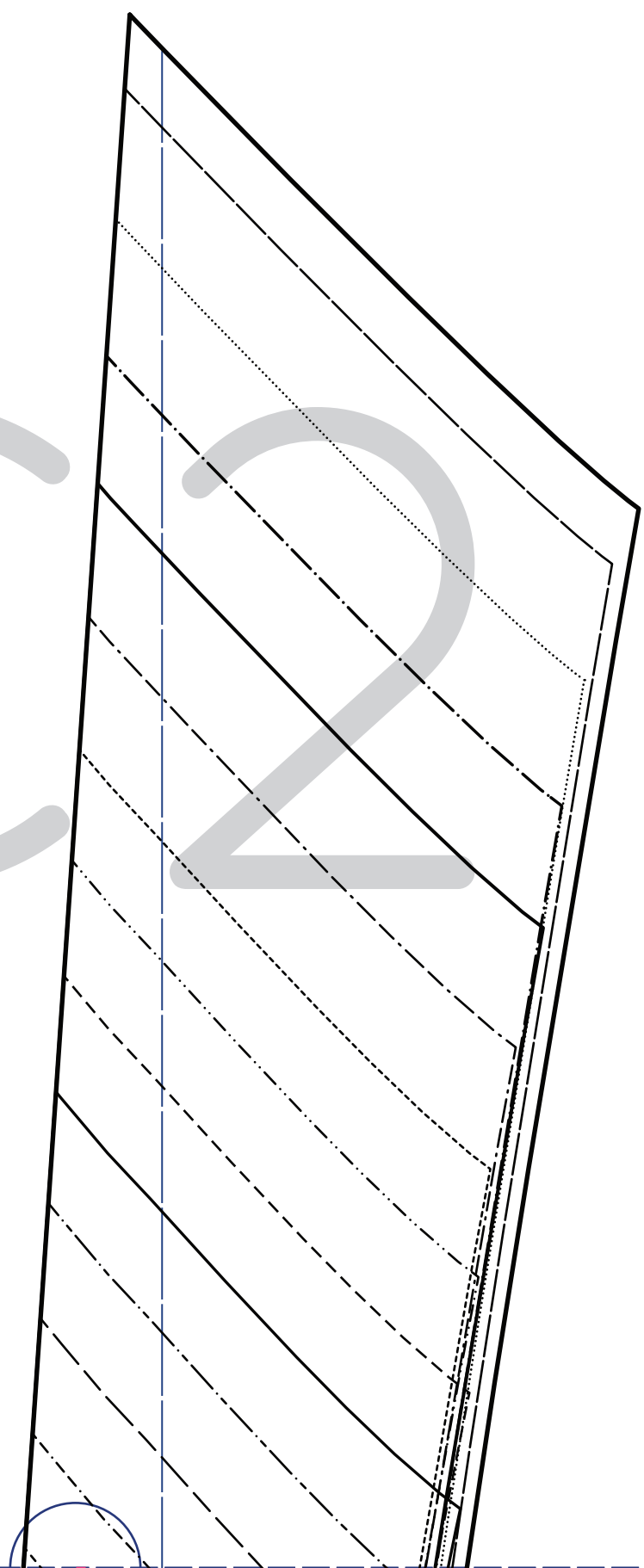


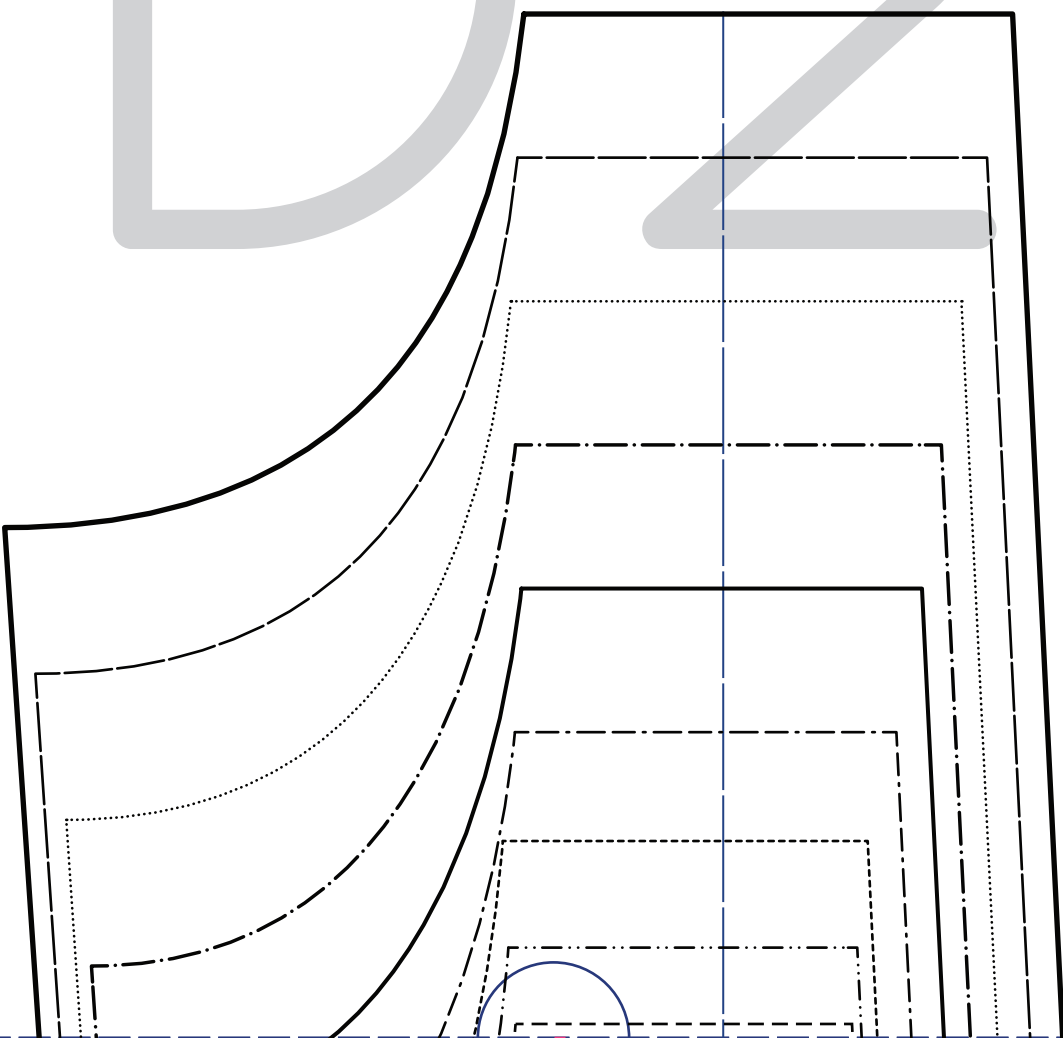
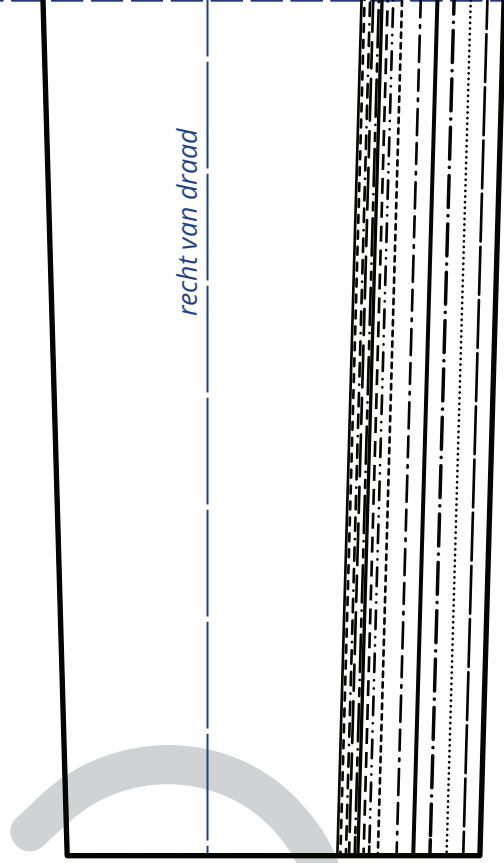
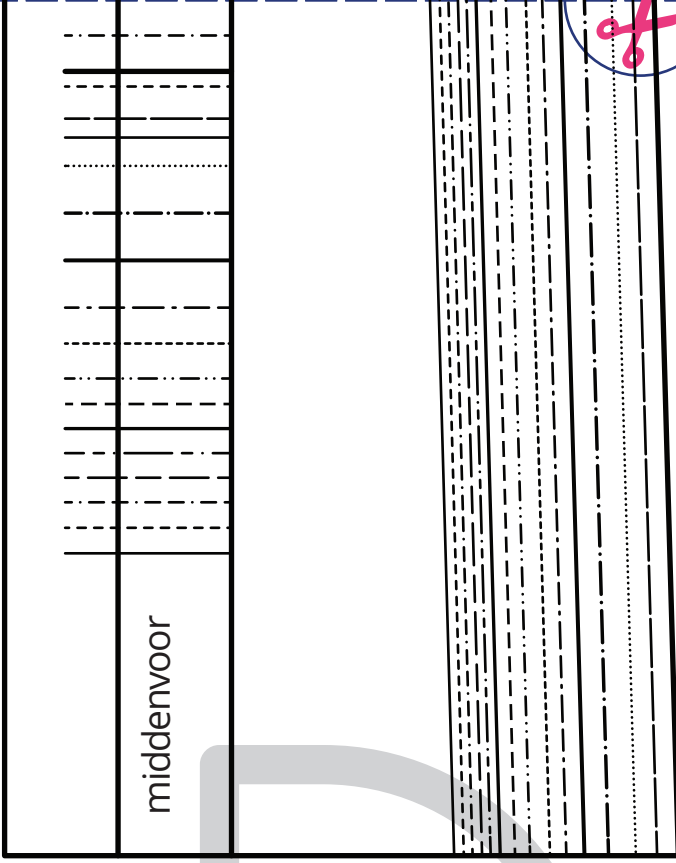




ma stofvouw

ma stofvouw

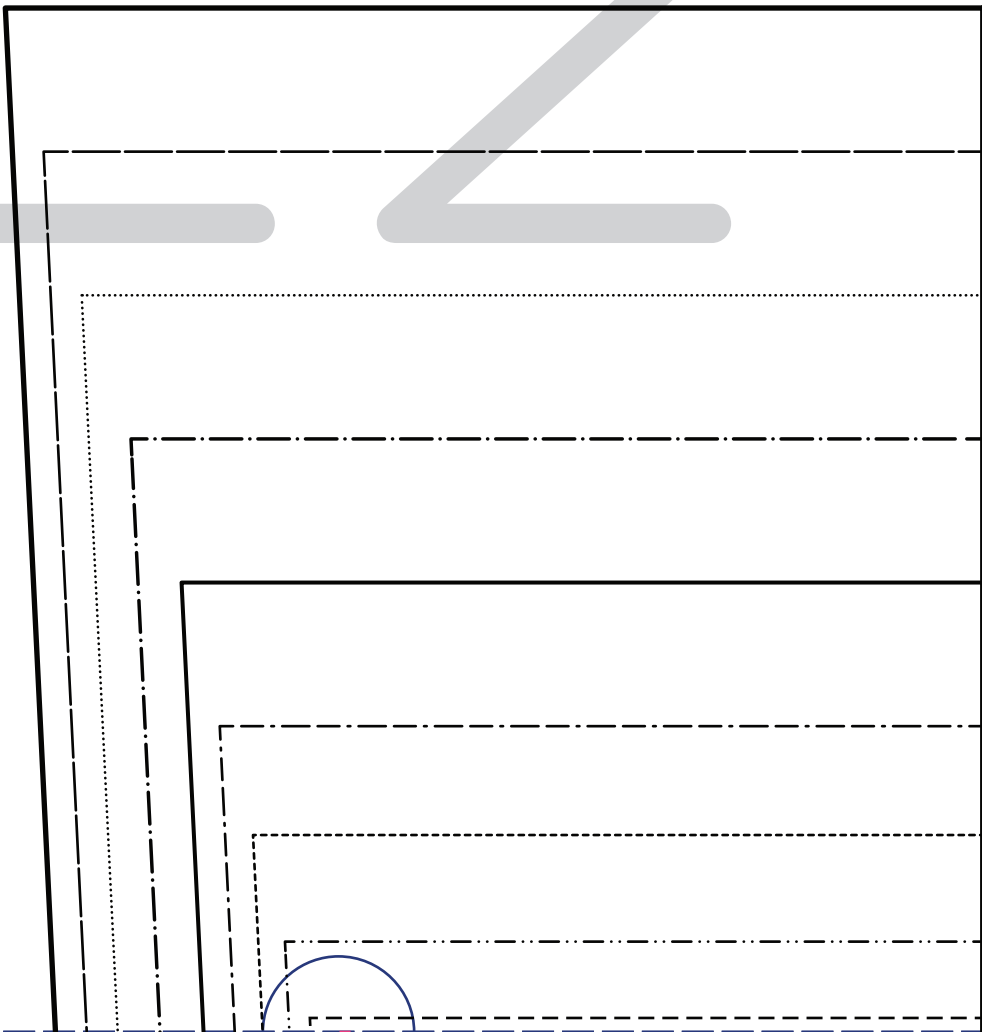
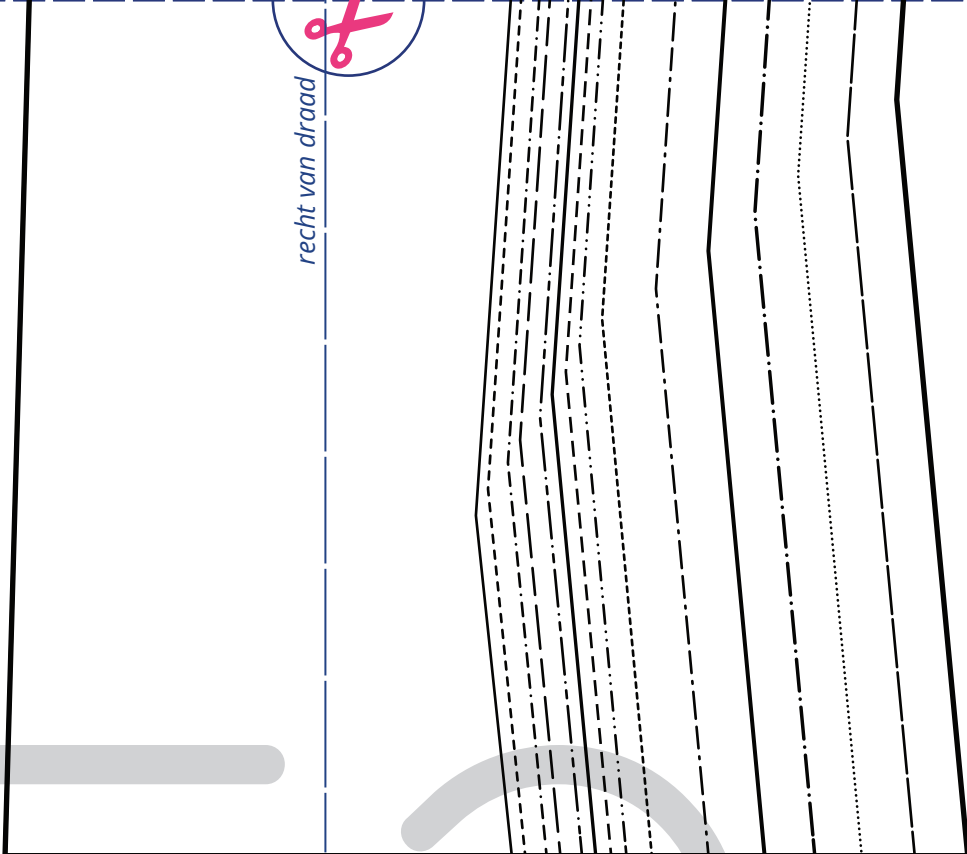




# Klassiek spijkerjasje

beleg voorpand

recht van draad



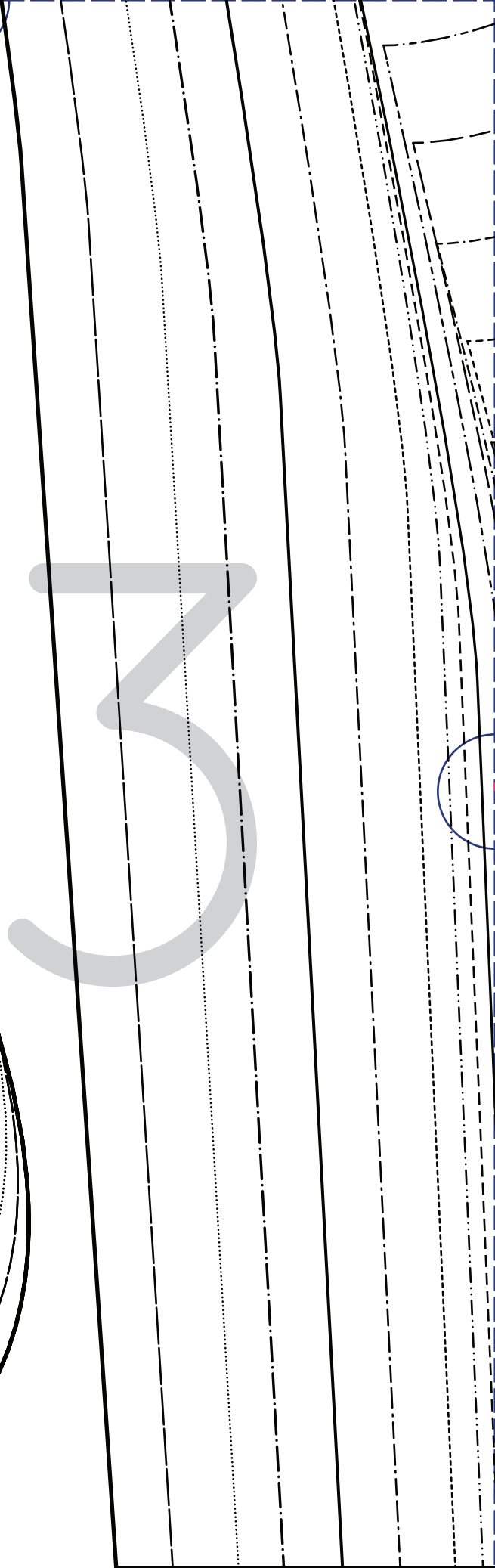
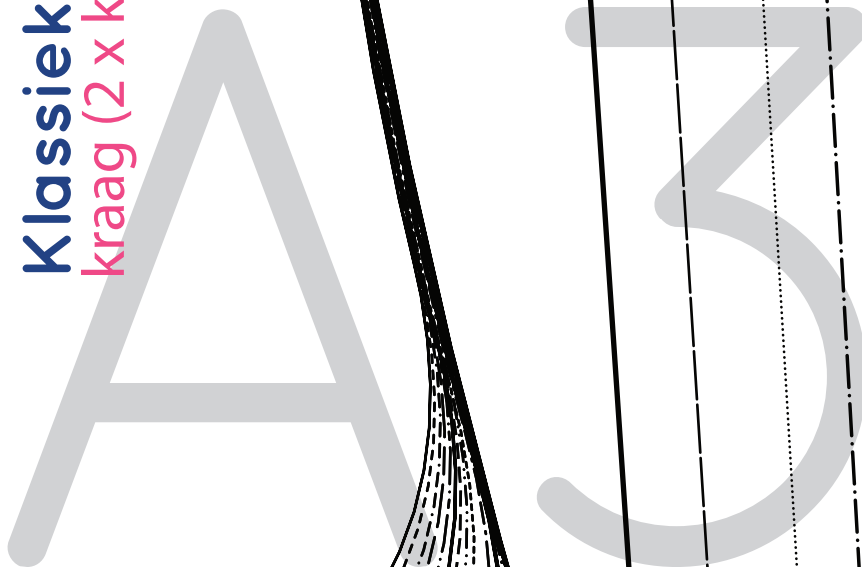
onderslag



middenachter stofvouw

# Klassiek spijkerjasje

kraag (2 x knippen)





**Klassiek spijkerjasje**  
bovenmouw

B3

*recht van draad*



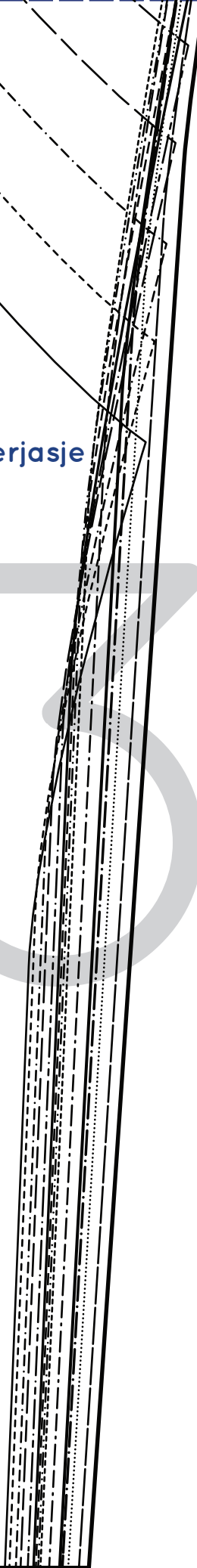
inkijk

**Klassiek spijkerjasje**  
band (2 x knippen)

onderslag

**Klassiek spijkerjasje**  
ondermouw

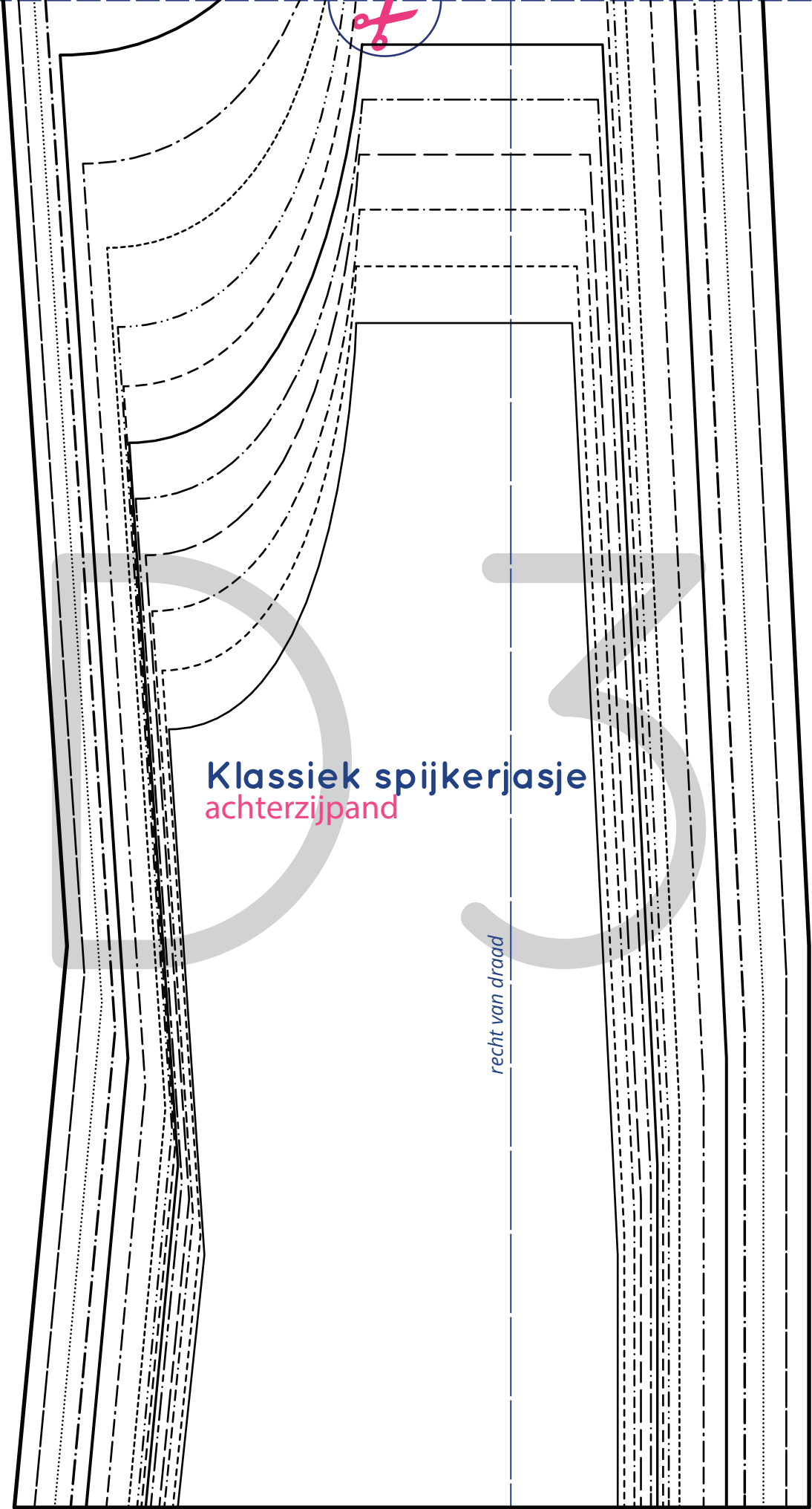
*recht van draad*





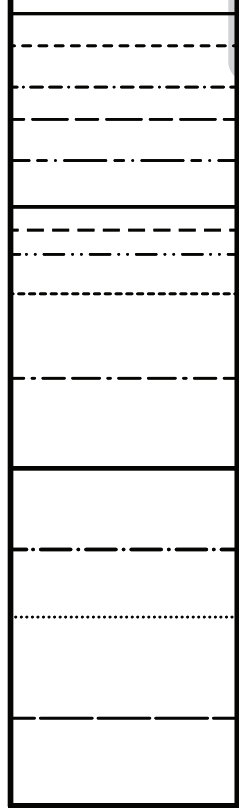
**Klassiek spijkerjasje**  
achterzijpand

*recht van draad*

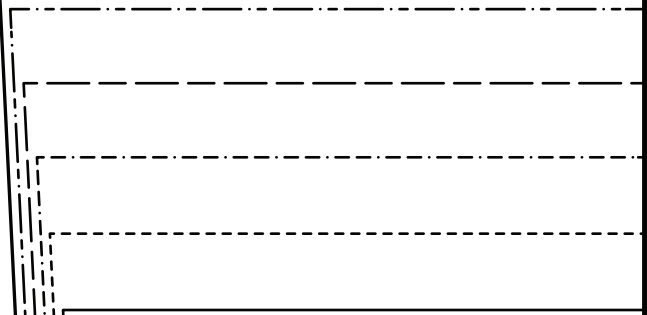




**Klassiek spijkerjasje**  
manchet (2 x knippen)



**Klassiek spijkerjasje**  
middenachterpand



middenachter stofvoew