

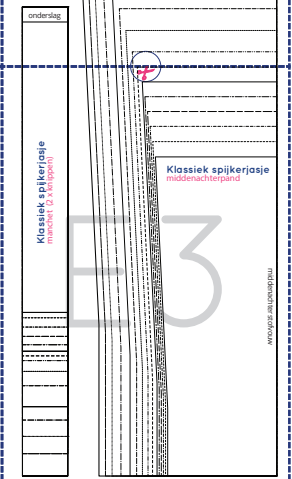
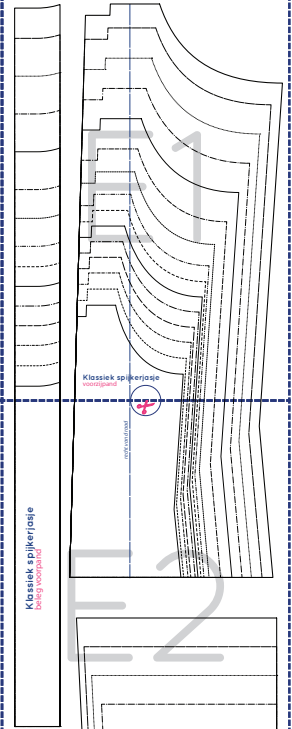
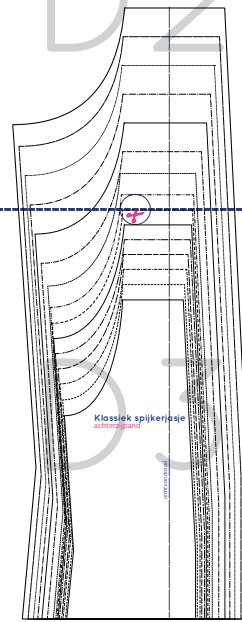
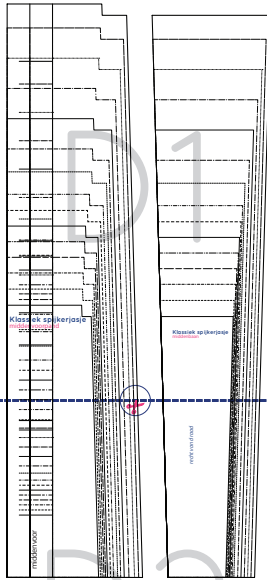
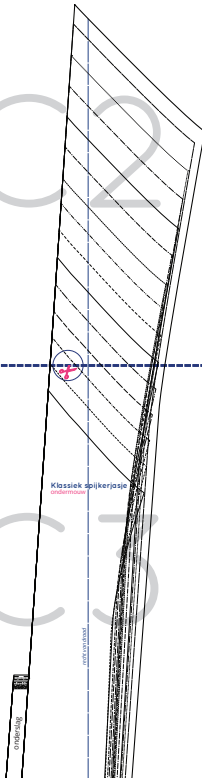
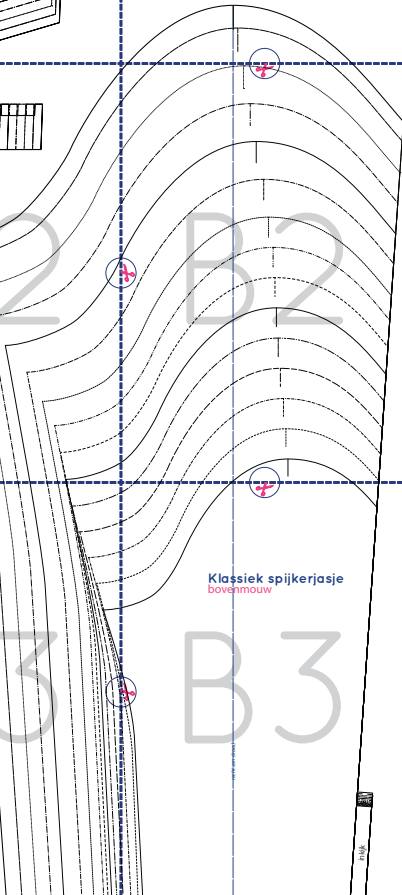
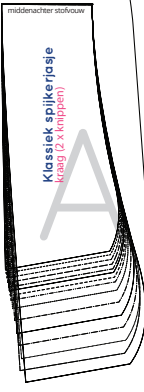
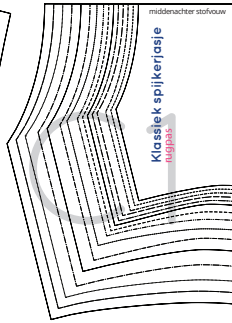
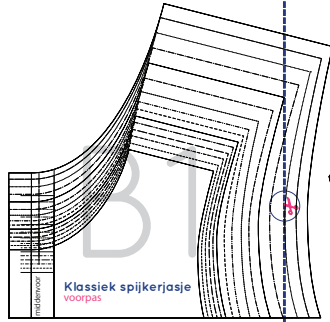
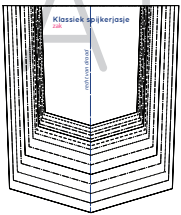
Klassiek spijkerjasje

maten 92 t/m 176 breedtemaat L

Print op ware grootte!

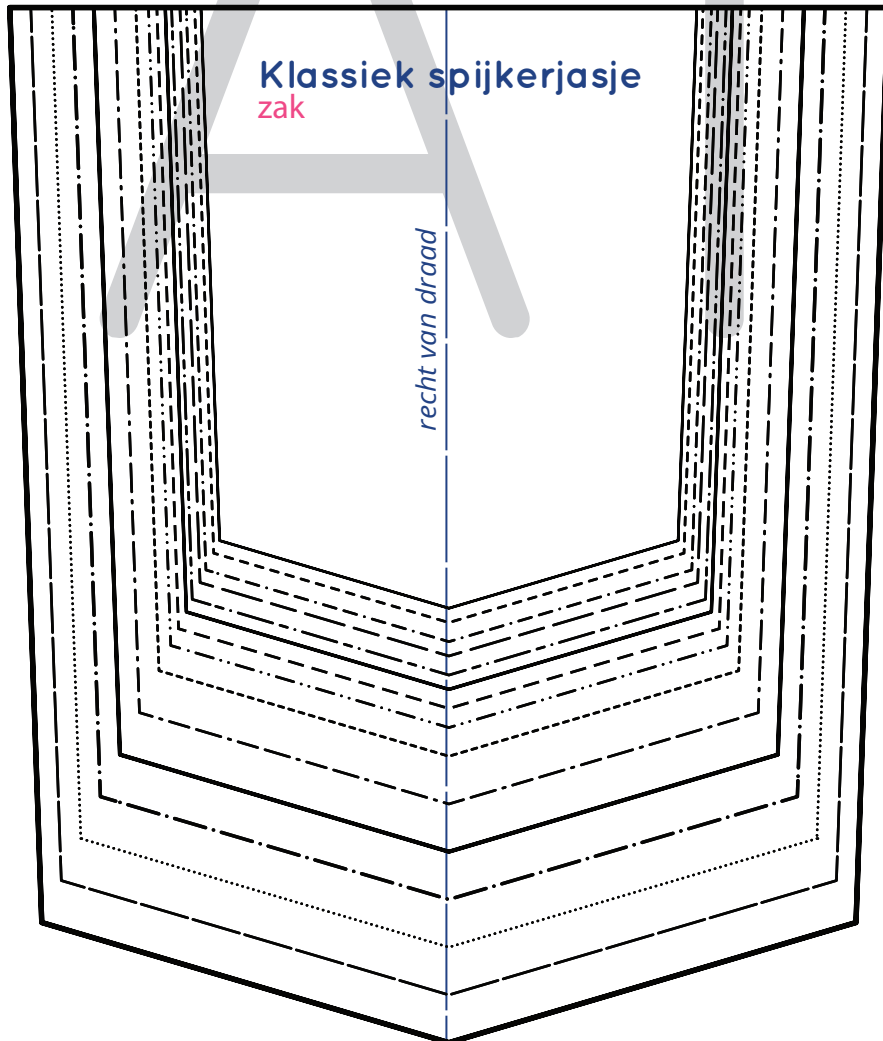
Print eerst deze pagina en controleer of je instellingen goed zijn door middel van dit testvierkantje van 5 x 5 cm.

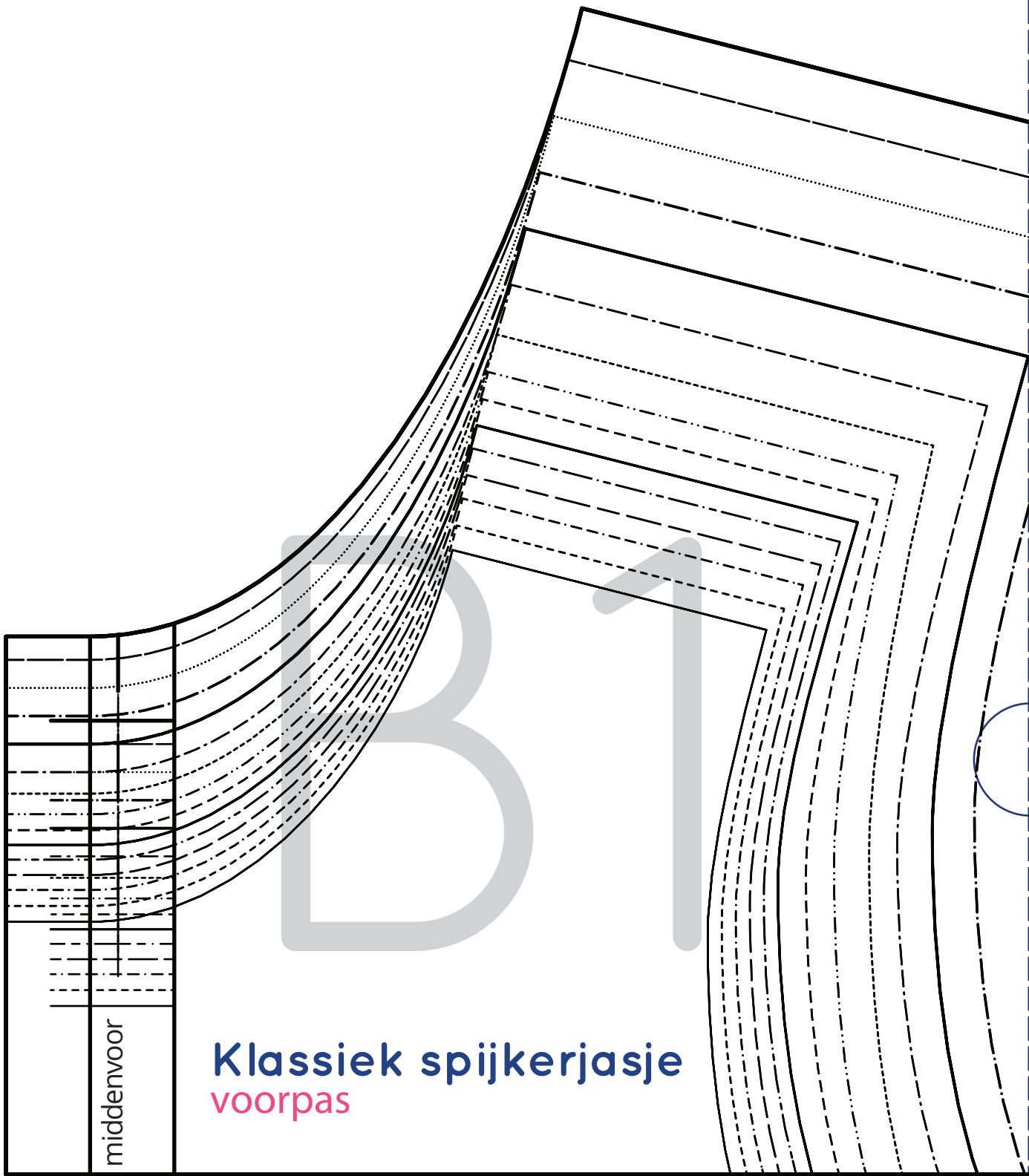
92	_____	140	-----
98	-----	146	-----
104	-----	152	_____
110	-----	158	-----
116	-----	164
122	_____	170	-----
128	-----	176	_____
134	-----		





modevakschool
Madamedam

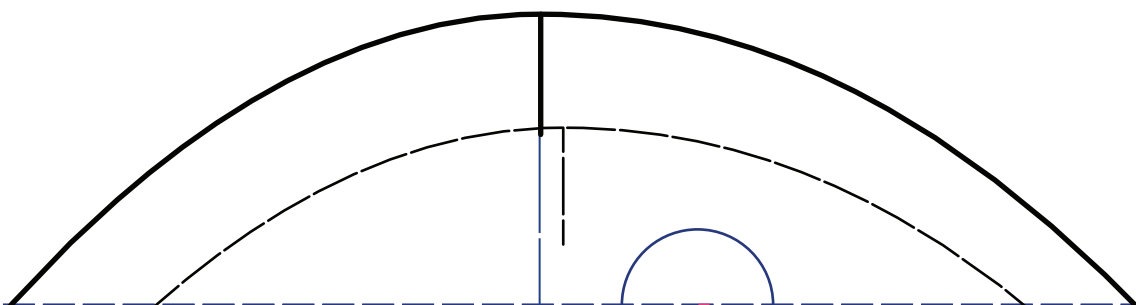




middenvoor

Klassiek spijkerjasje

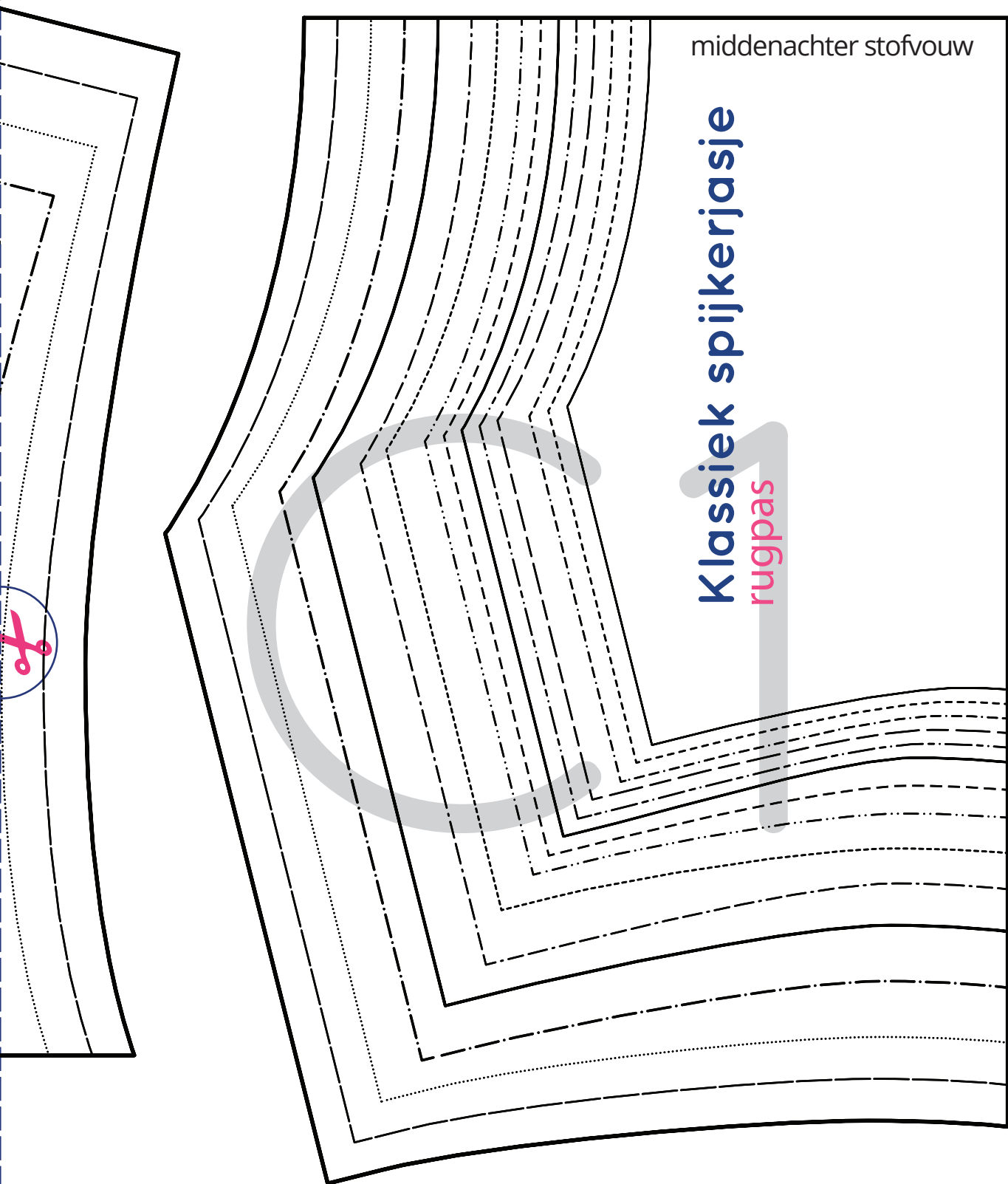
voorpas

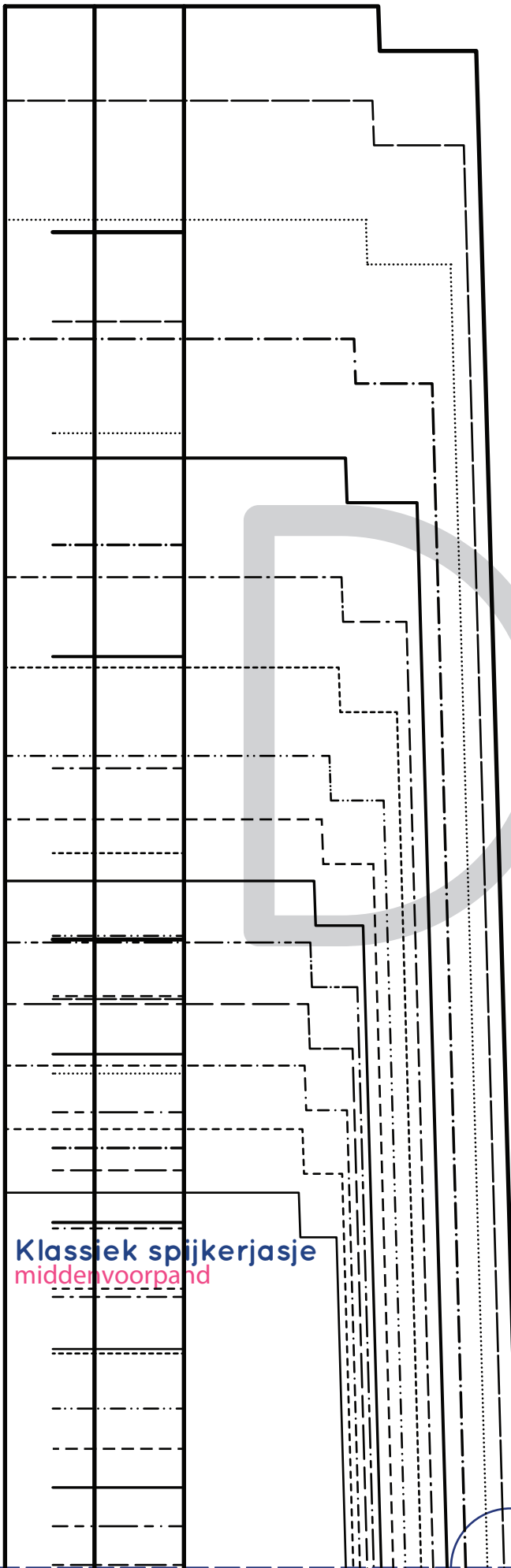


middenachter stofvouw

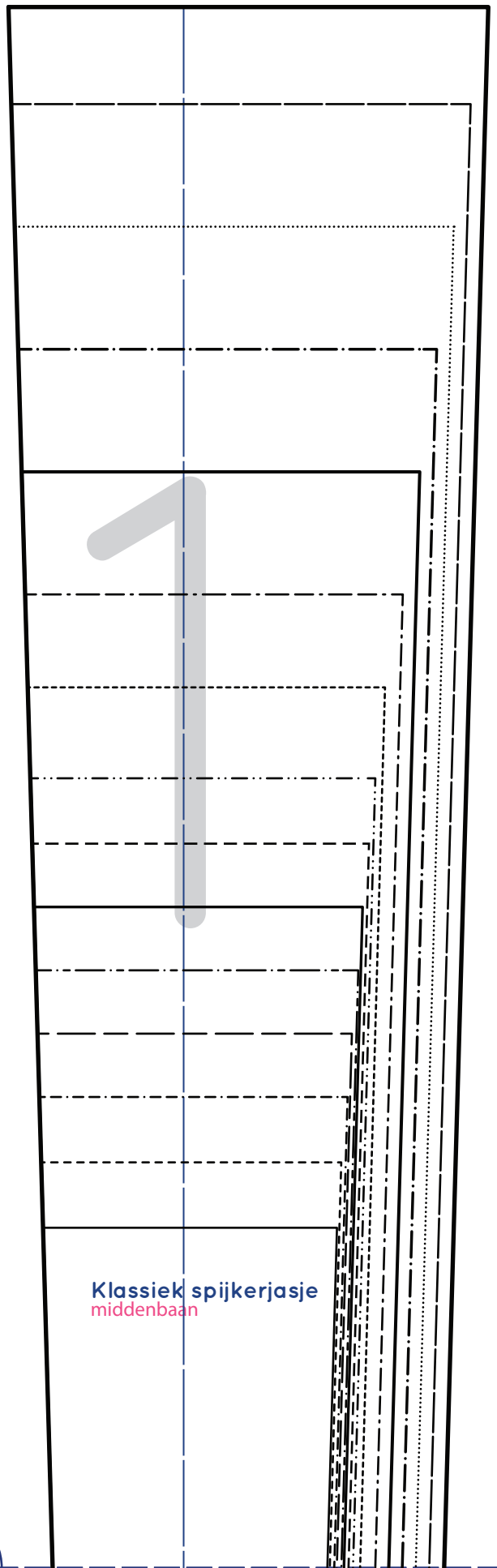
Klassiek spijkerjasje

rugpas

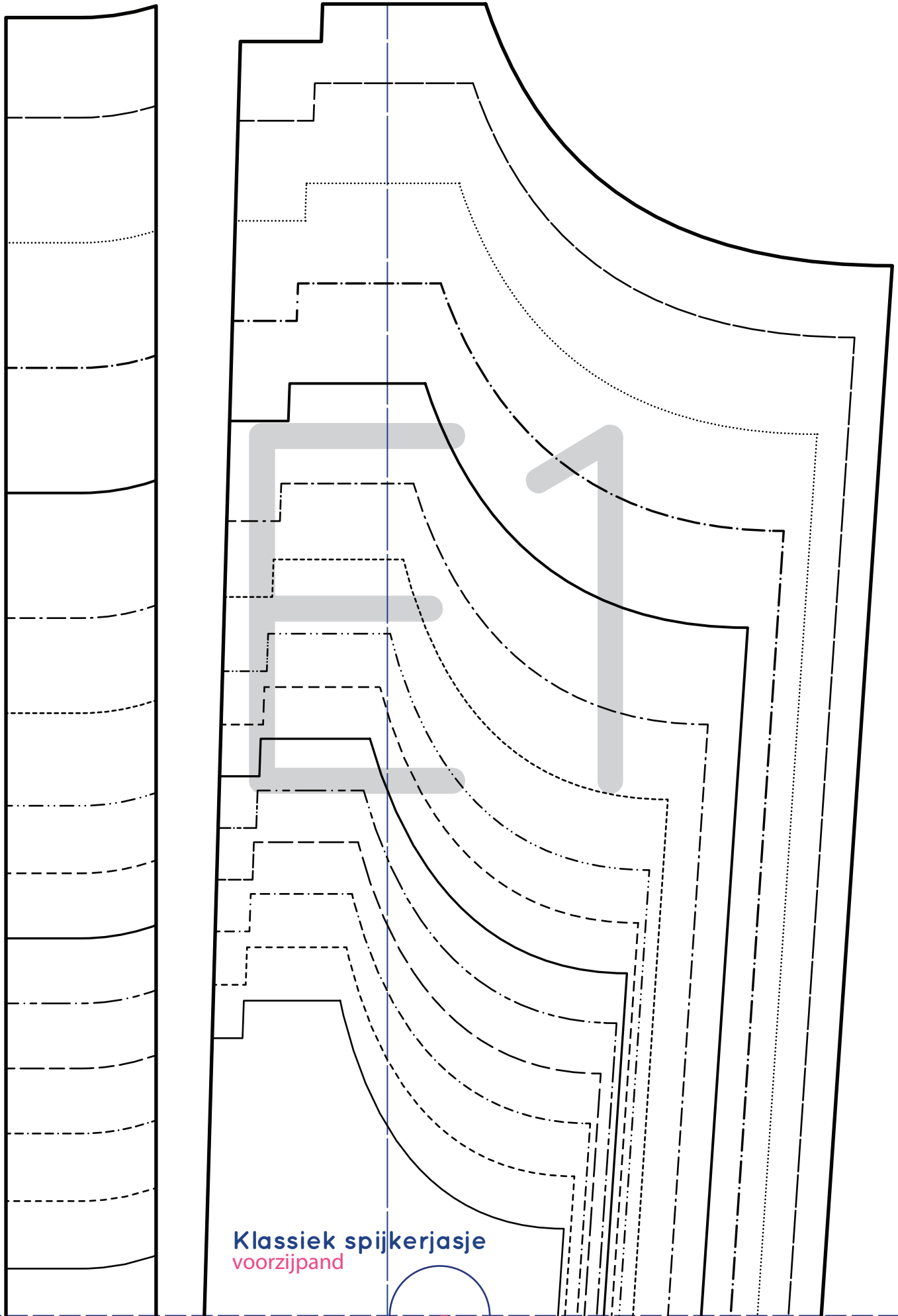




Klassiek spijkerjasje
middenvoorzand

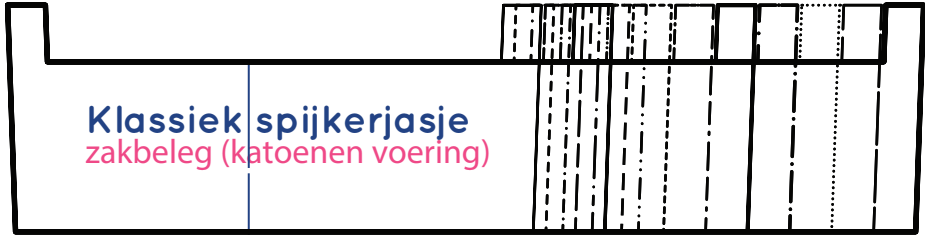


Klassiek spijkerjasje
middenbaan

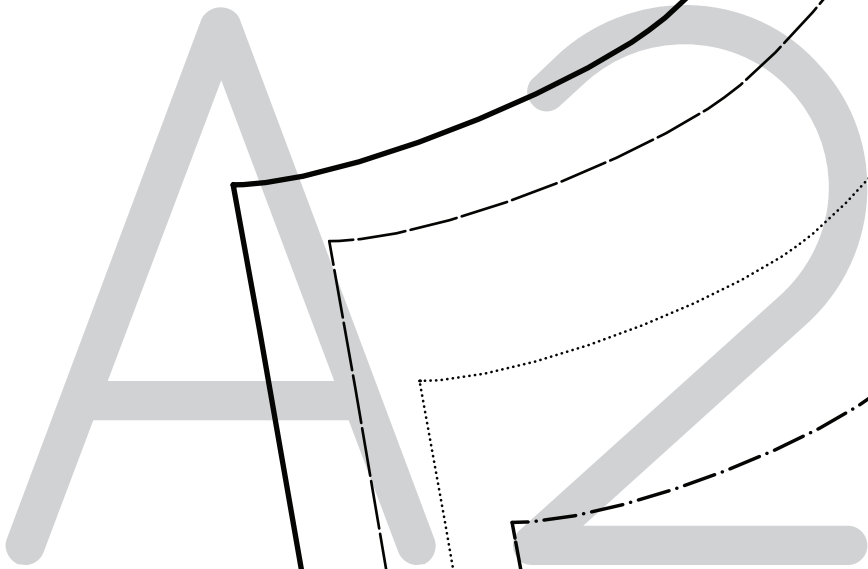


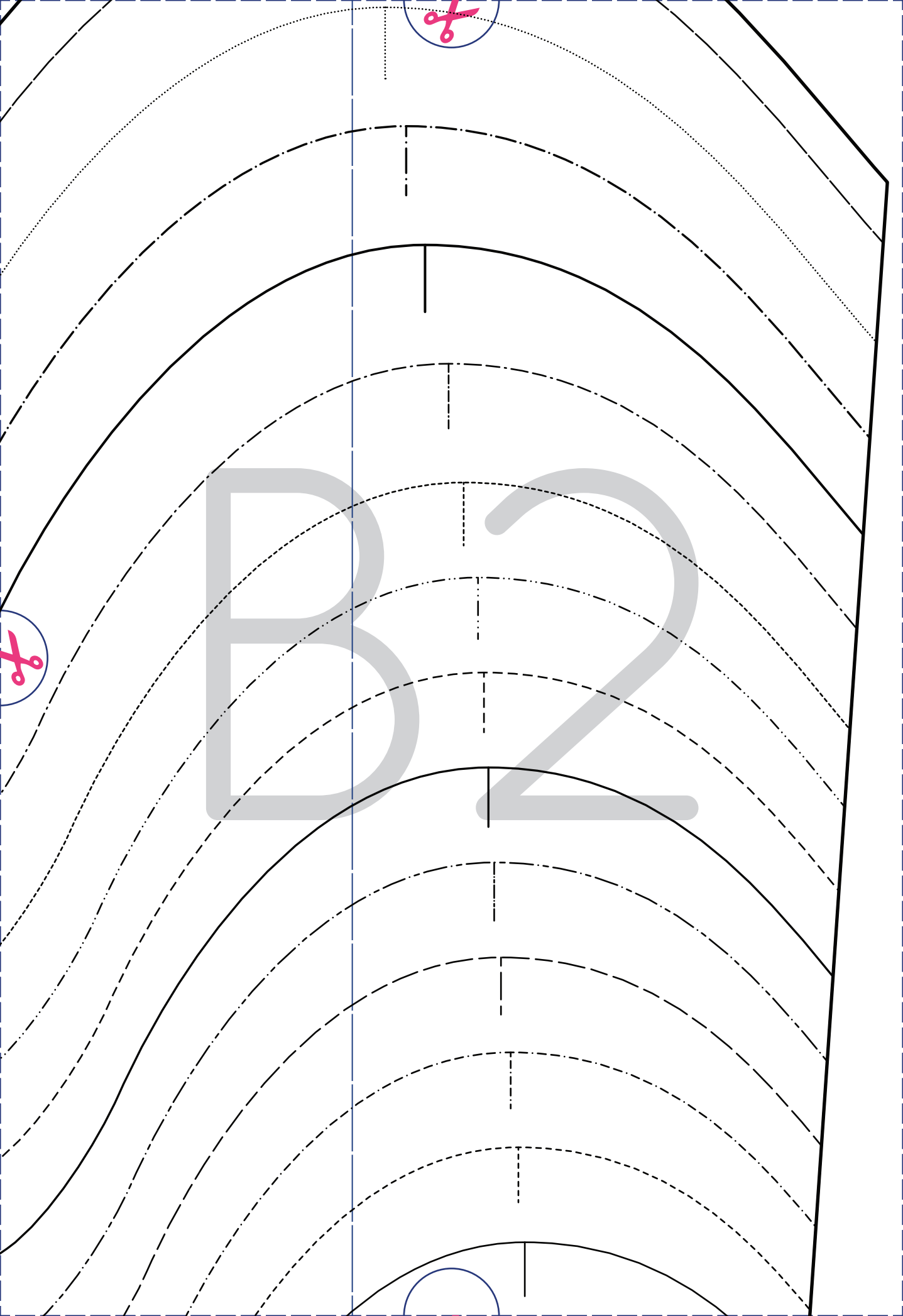
Klassiek spijkerjasje
voorzijpand





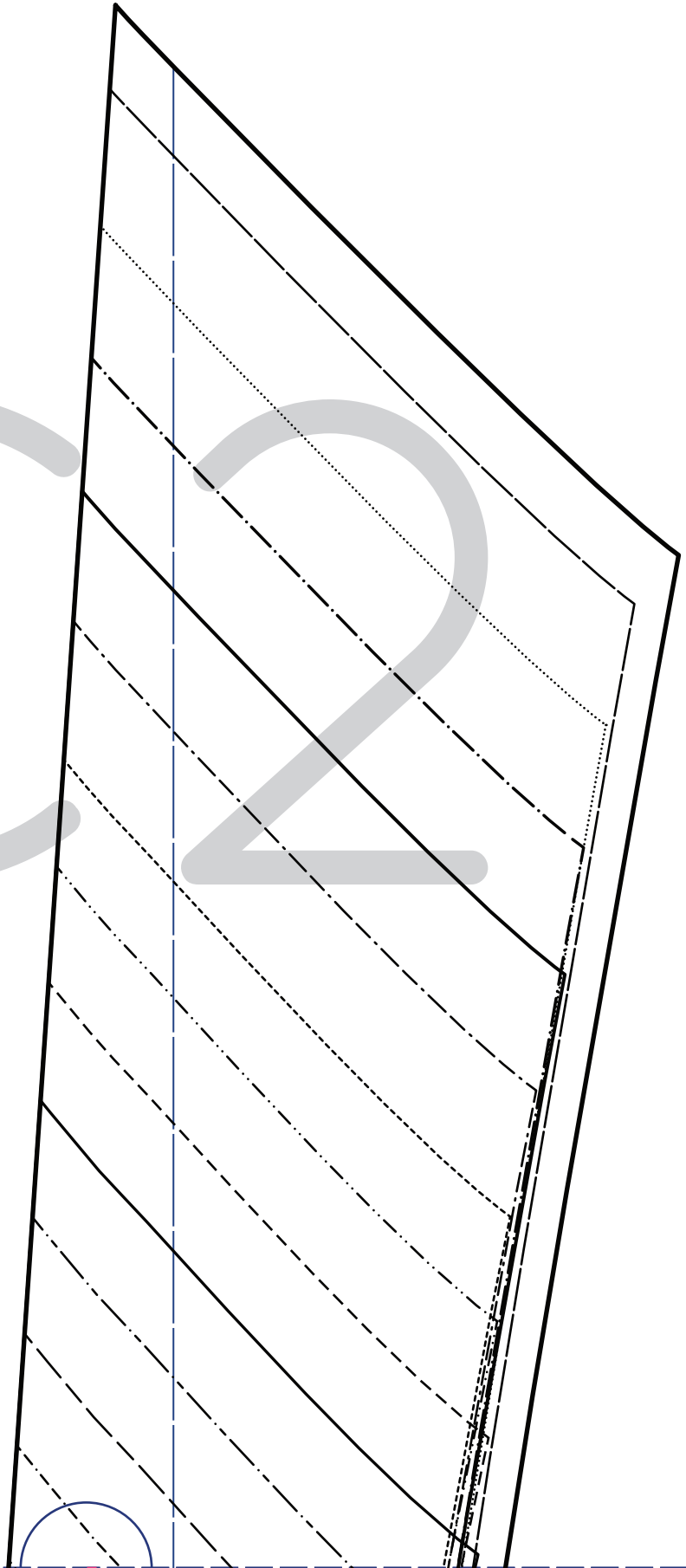
Klassiek spijkerjasje
zakbeleg (katoenen voering)





ma stofvouw

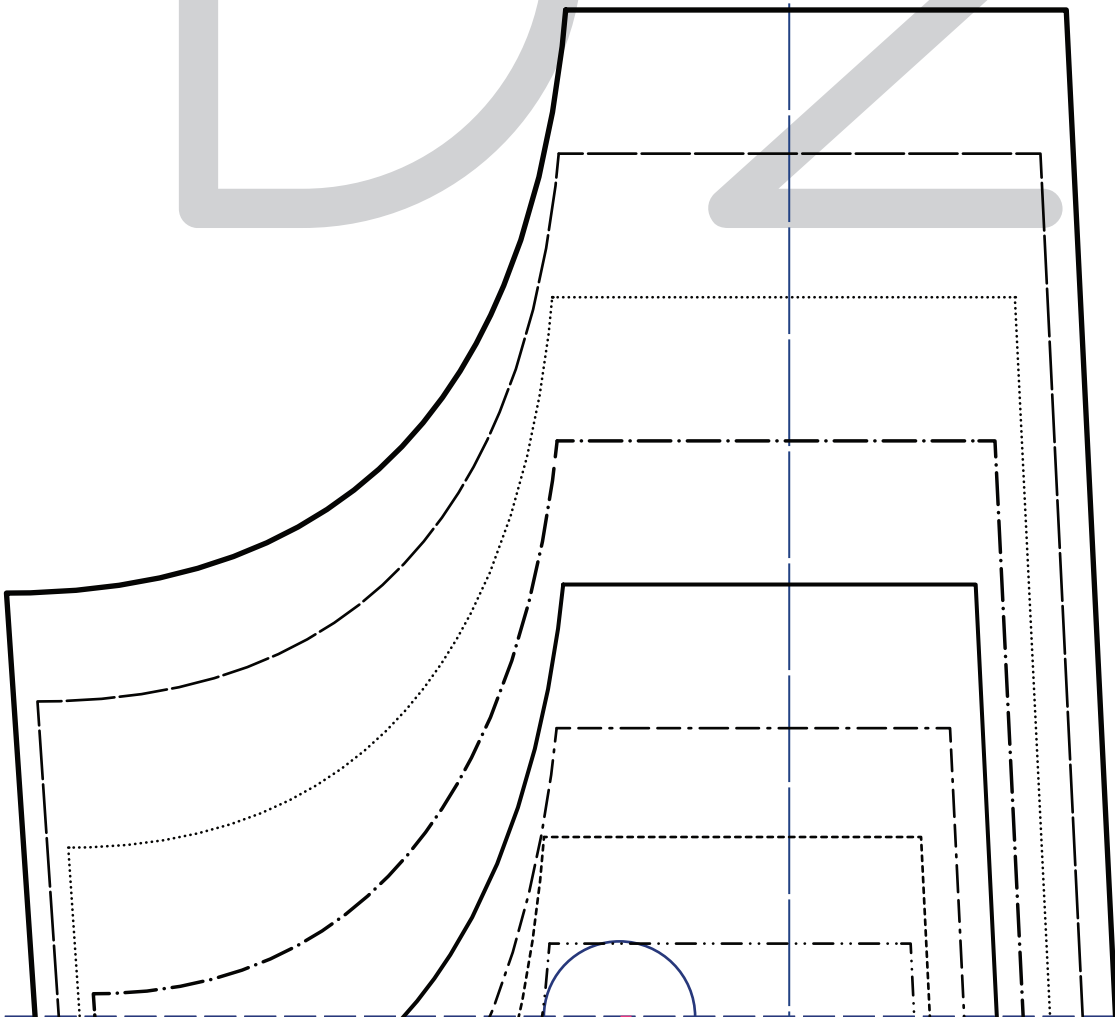
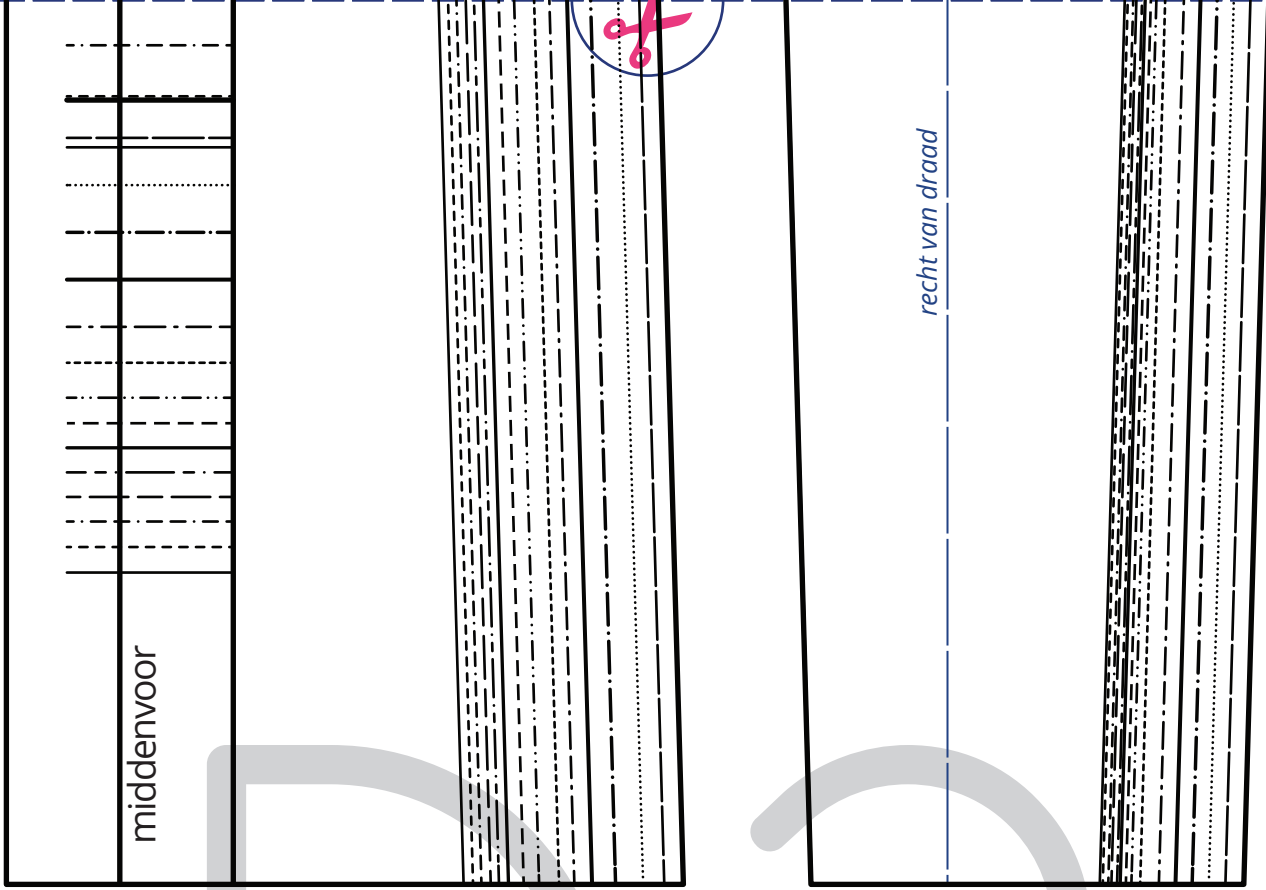
ma stofvouw





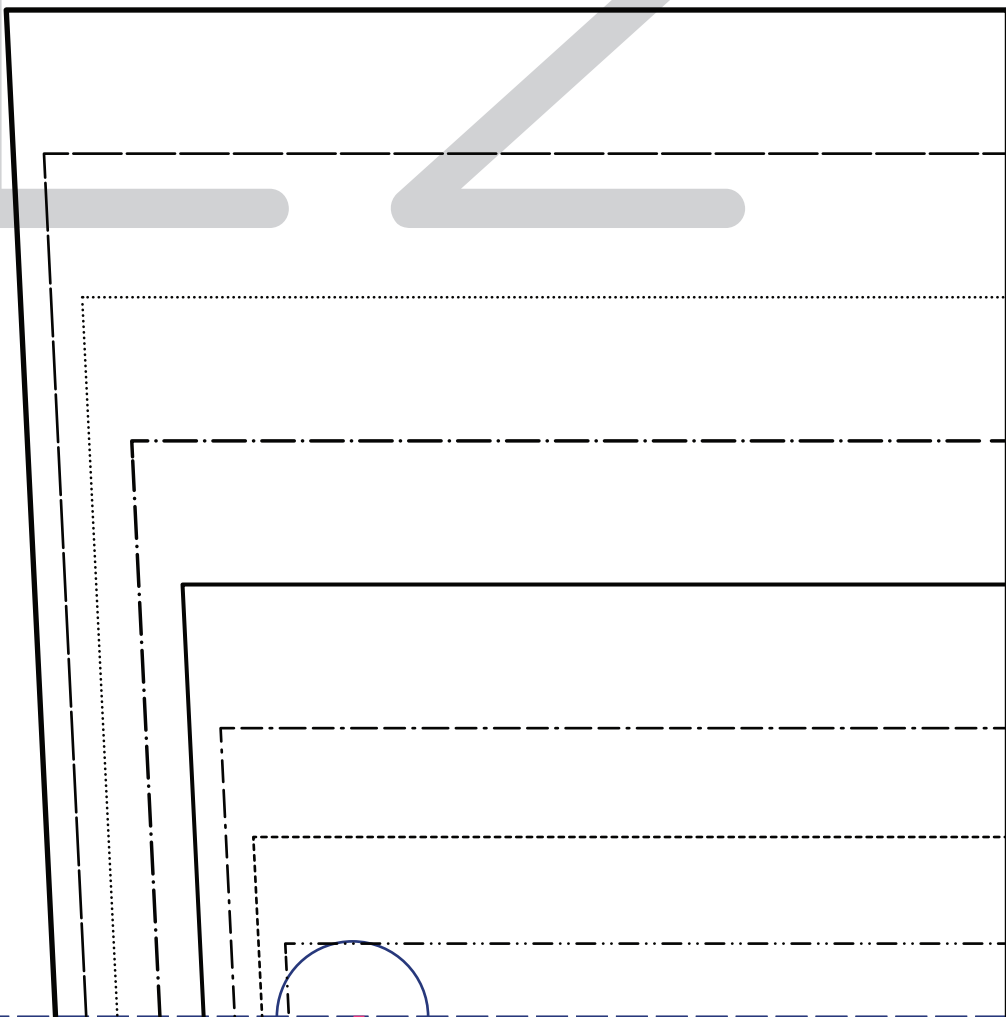
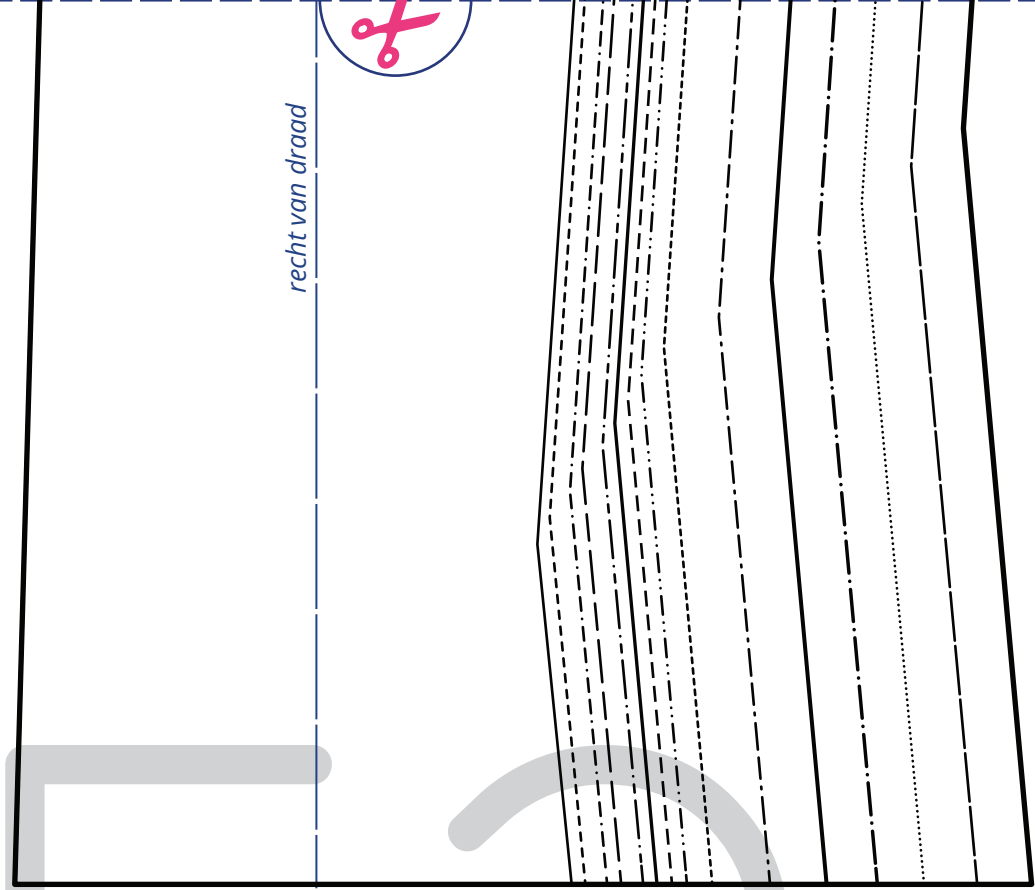
middenvoor

recht van draad



Klassiek spijkerjasje beleg voorpand

recht van draad



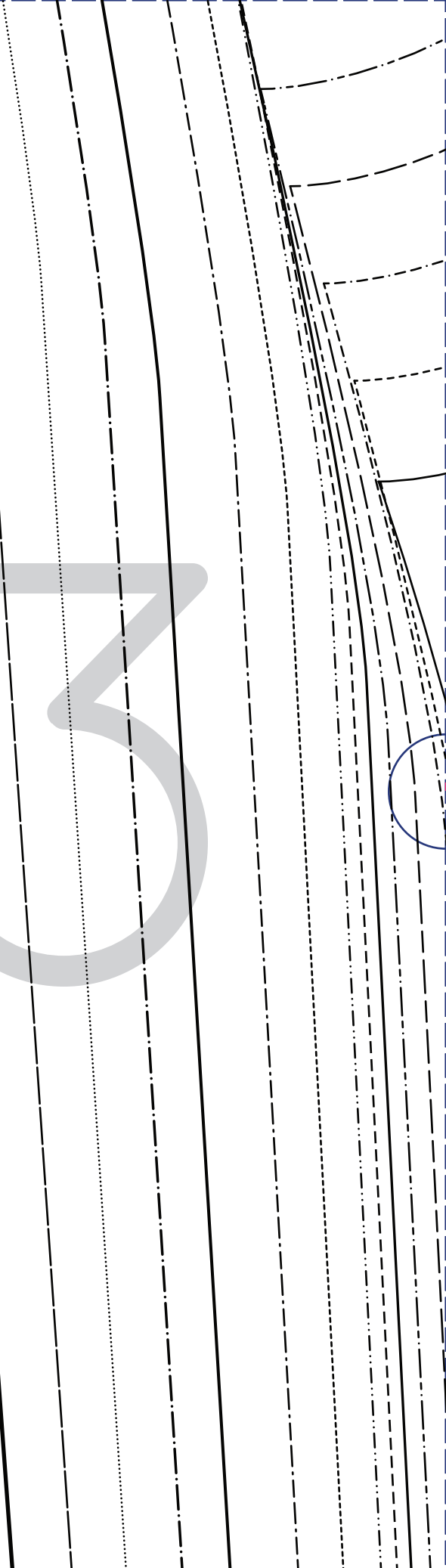
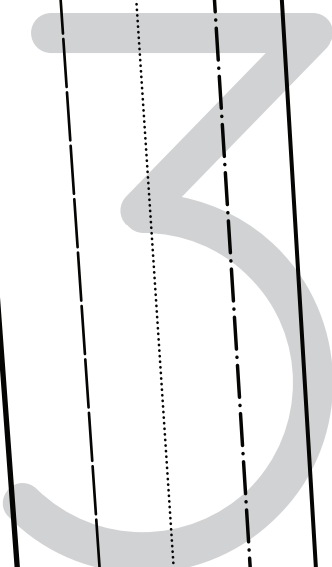
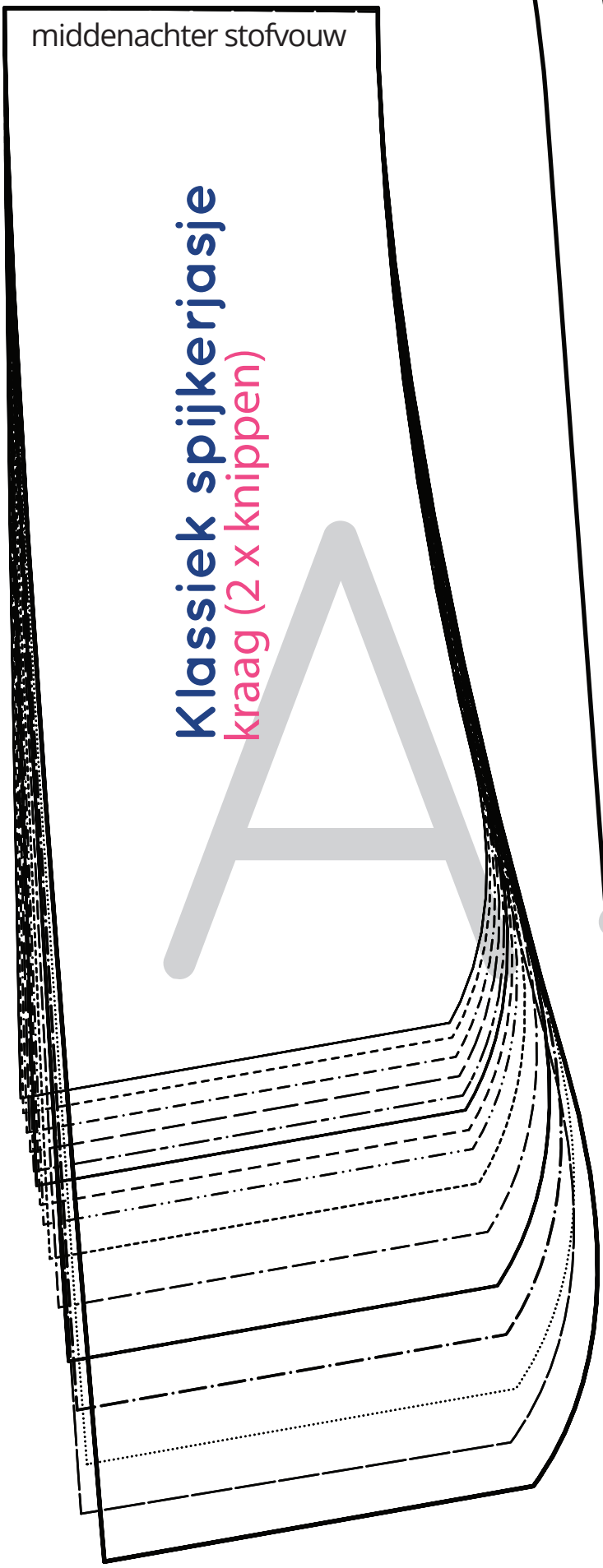
onderslag



middenachter stofvouw

Klassiek spijkerjasje

kraag (2 x knippen)





Klassiek spijkerjasje
bovenmouw

B3

recht van draad



inkijk

Klassiek spijkerjasje
band (2 x knippen)

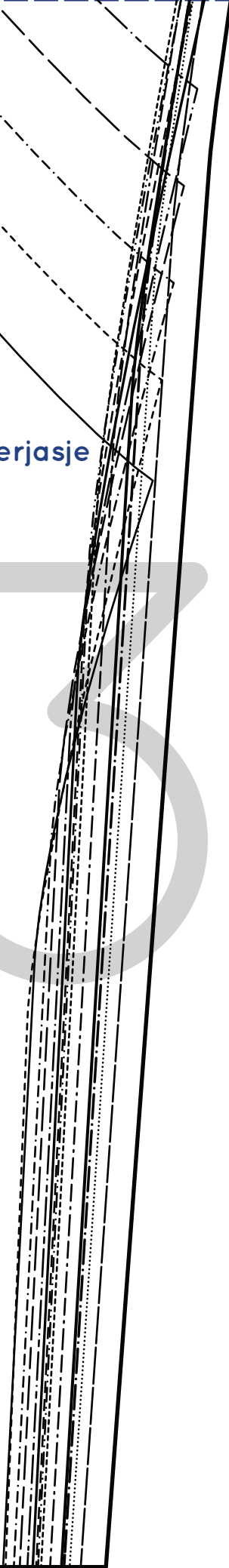


onderslag

Klassiek spijkerjasje
ondermouw



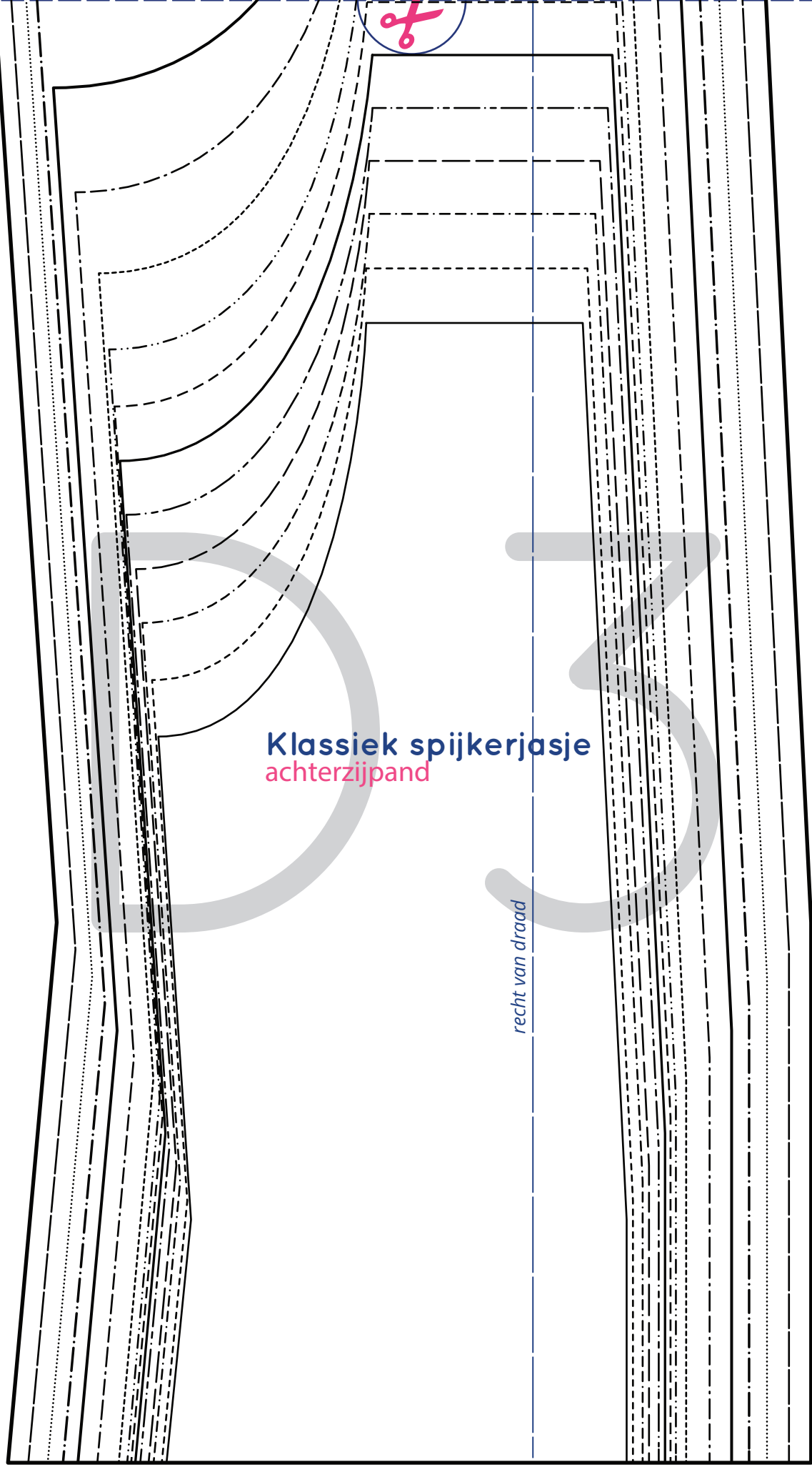
recht van draad





Klassiek spijkerjasje
achterzijpand

recht van draad



Klassiek spijkerjasje
manchet (2 x knippen)



Klassiek spijkerjasje
middenachterpand

middenachter stofvouw

